

Conf. 1/11/11

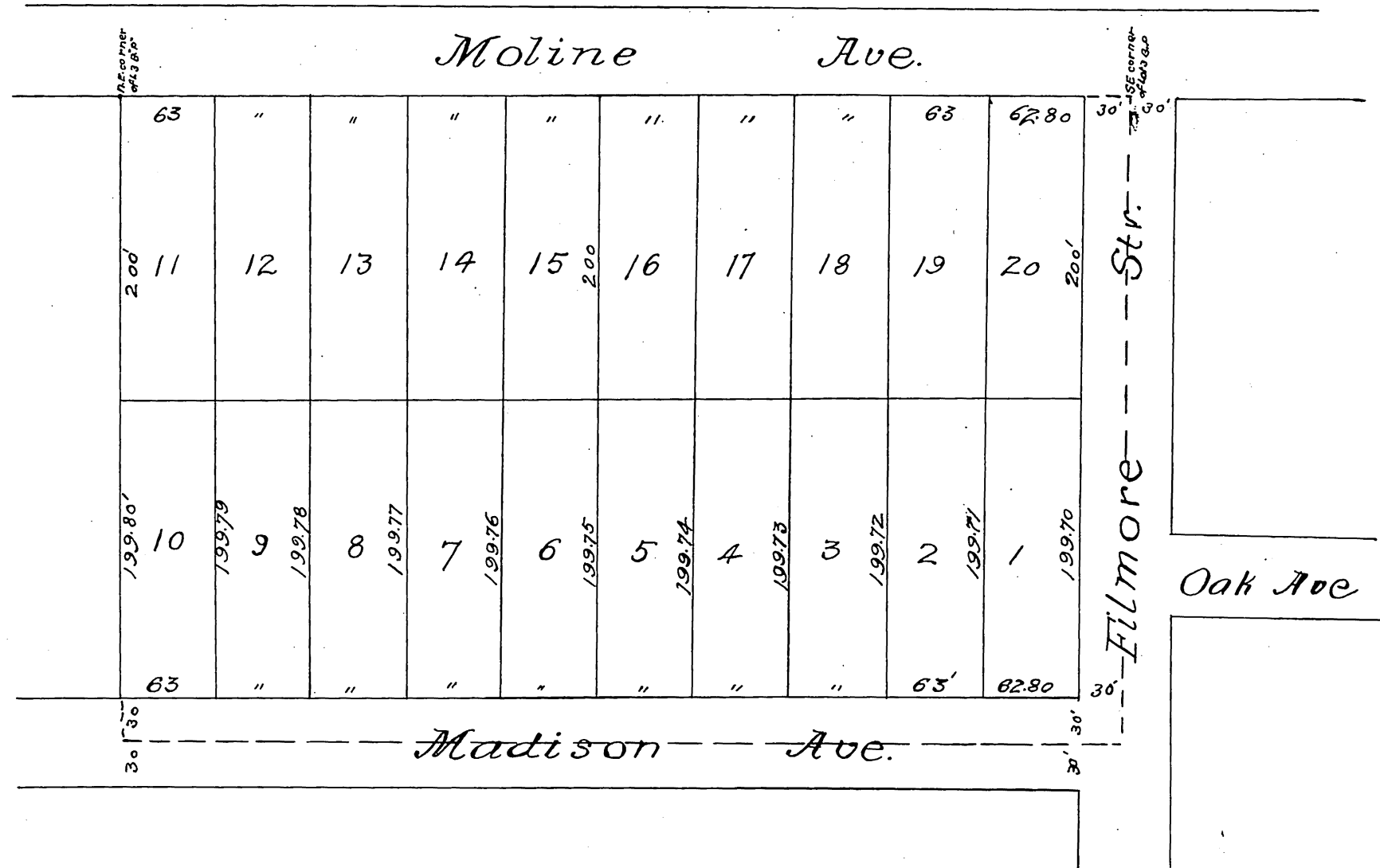
For widening Moline Ave D2436-310 J: 8-29

Map of the  
 M<sup>c</sup>Kee <sup>(E.T.B.)</sup> Lindsay Subdivision  
 BEING THE EAST 6.06 ACRES OF LOT 3 BLOCK "P" OF THE  
 San Pasqual Tract  
 OF LANDS  
 OF THE LAKE VINEYARD LAND & WATER ASSOCIATION  
 Pasadena Cal

Scale 60'-1"  
 Reduced to 100ft to an inch.

SURVEYED JULY 1887 BY  
 PLACE & PIEPER  
 Surveyors and C. ENGRS.

Recorded Aug. 31, 1887,  
 Request of M<sup>c</sup>Kee & Lindsay



22