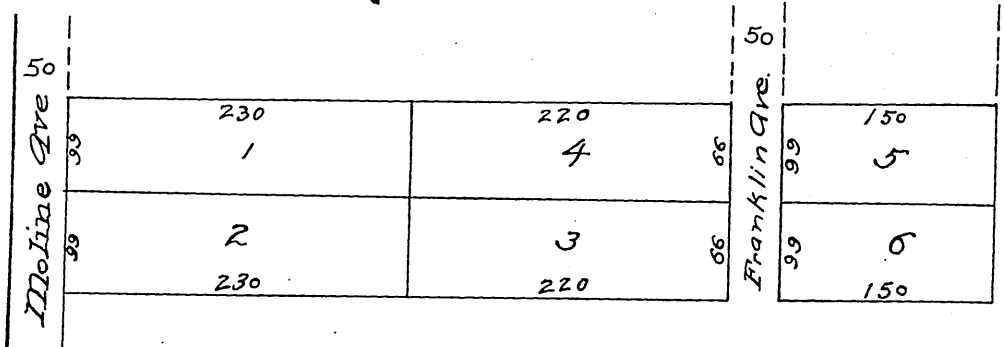




Emma Quarles Subdivision

Being 2 acres off of the south side
of Lot 5, Block K, San Pasqual Tract
of the lands of the Lake Vine
Yard Land and Water As-
sociation, Pasadena, Cal
Surveyed Aug. 1887 Riggins Bros, Surveyors
Scale 2 chs to 1 inch



Recorded Aug. 31, 1887.
Request of Emma Quarles.

Franklin Ave changed to Oak Knoll Ave Ord 1705, D:25-89.

*Compiled
Emma*