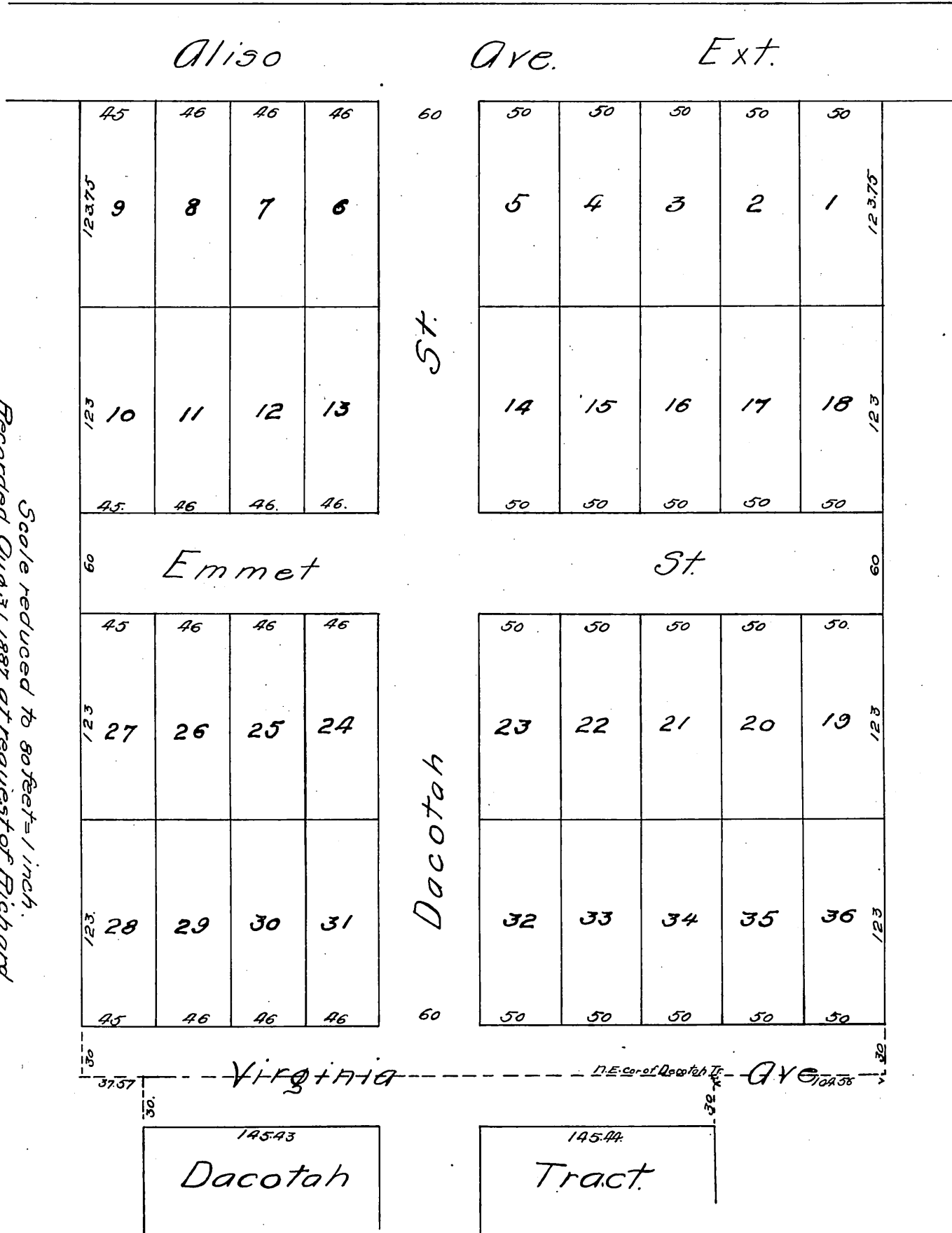


Plat  
of the  
Corcoran Tract  
in the  
CITY OF LOS ANGELES  
Scale 50 feet to one inch.

Emmet St. changed to Gleason Ave. - ord. 37006

Scale reduced to 50 feet = 1 inch.  
Recorded Aug. 31, 1887 at request of Richard  
Corcoran.



Comfy  
of MR