

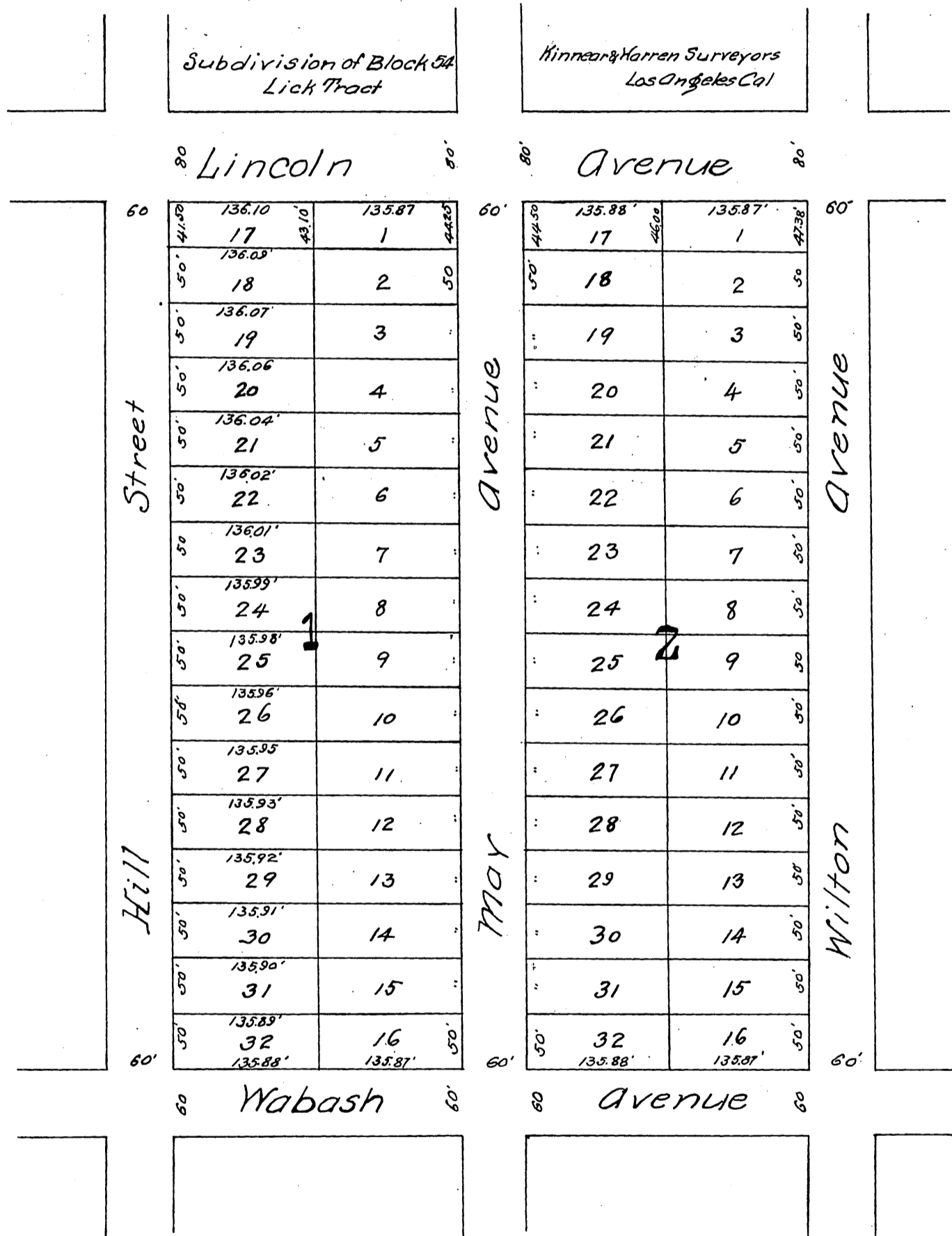
MAP

OF THE

BITTLE TRACT

LOS ANGELES CAL.

Scale 50ft=1in
Reduced to 12 of pts an inch.



Recorded Sept. 1, 1887. at 9.10 A.M. at request
of W. A. Johnson

- ← Hill St changed to Hoover St D: 13-6 RB 10-36
- ← Lincoln Ave changed to Emil St D: 13-6 RB 11-125
- ← Emil St changed to Sunset Drive Ord 20267
- ← Wabash Ave " " Benefit St " 21229
- ← Wilton Ave " " Myra Ave " 22915
- ← May St " " Bates Ave " 22917
- ← Hoover St " " Talmadge St " 22920
- ← Benefit St " " Fountain Ave " 22992
- ← EMIL ST. CHANGED TO SUNSET DRIVE. ORD. 27761.
- ← VAC. POR. OF SUNSET DRIVE. ORD. 28461. 130

*Checked
C.M.M.*