

2293

— PLAT —

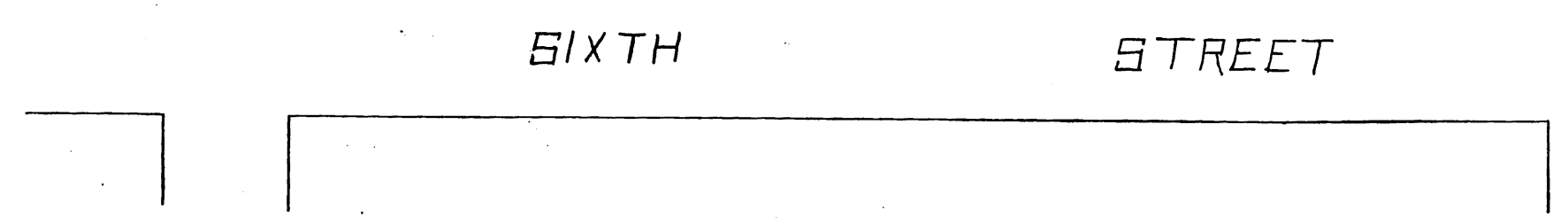
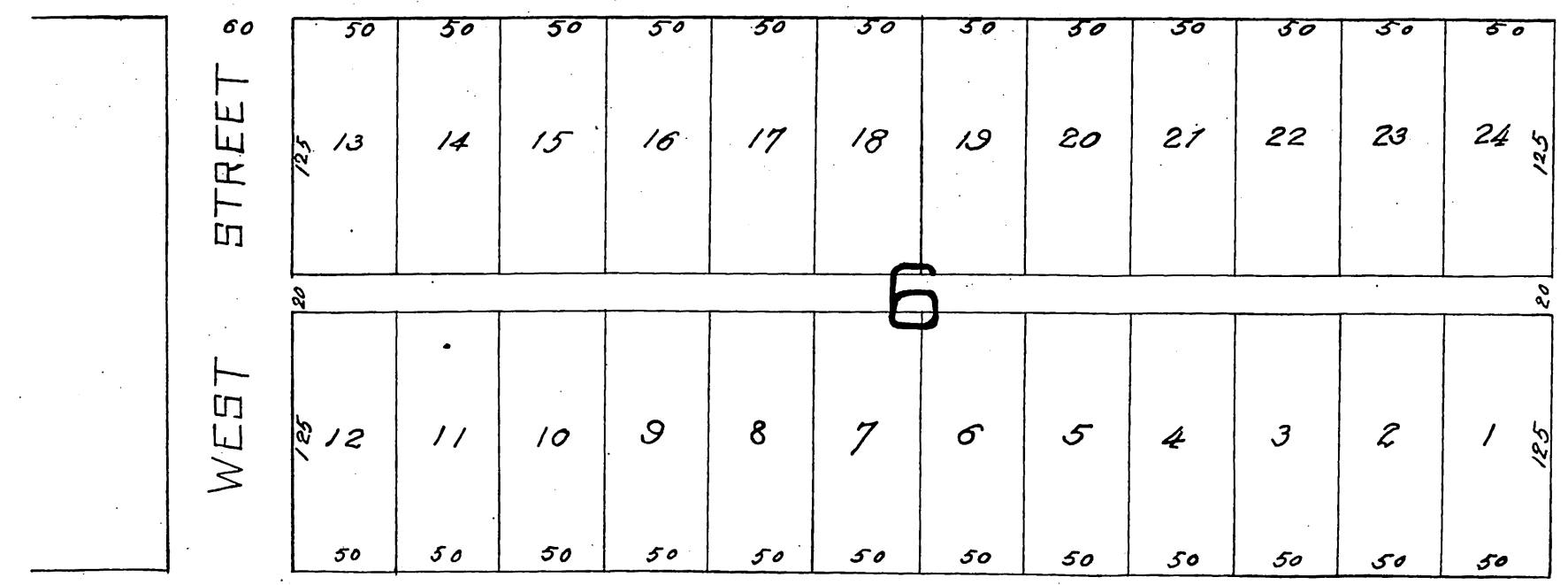
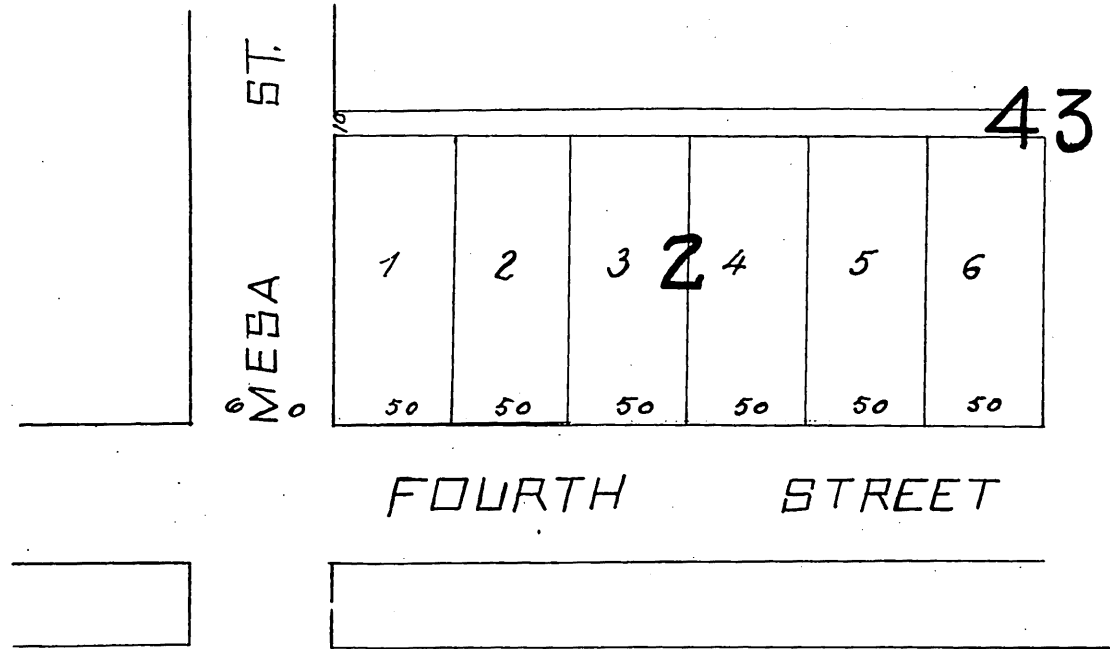
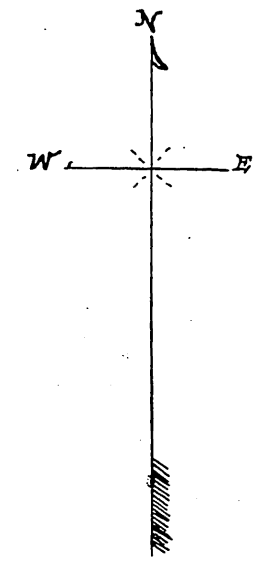
SUBDIVISION OF BLOCK ^{OF} 6 AND LOT 2, BLOCK 43

— TOWN OF SAN PEDRO —

PART OF RANCHO LOS PALO VERDES IN LOS ANGELES CO CAL.

Charles T. Healey, Surveyor August 22nd 1887.

SCALE 60 FEET TO 1 INCH.



reduced to a scale of 60 feet to the inch recorded Sept 3, 1887 at 10.15 A.M. at request of O. W. Sepulveda.

For Widening of 5th. St. See C.F. 992