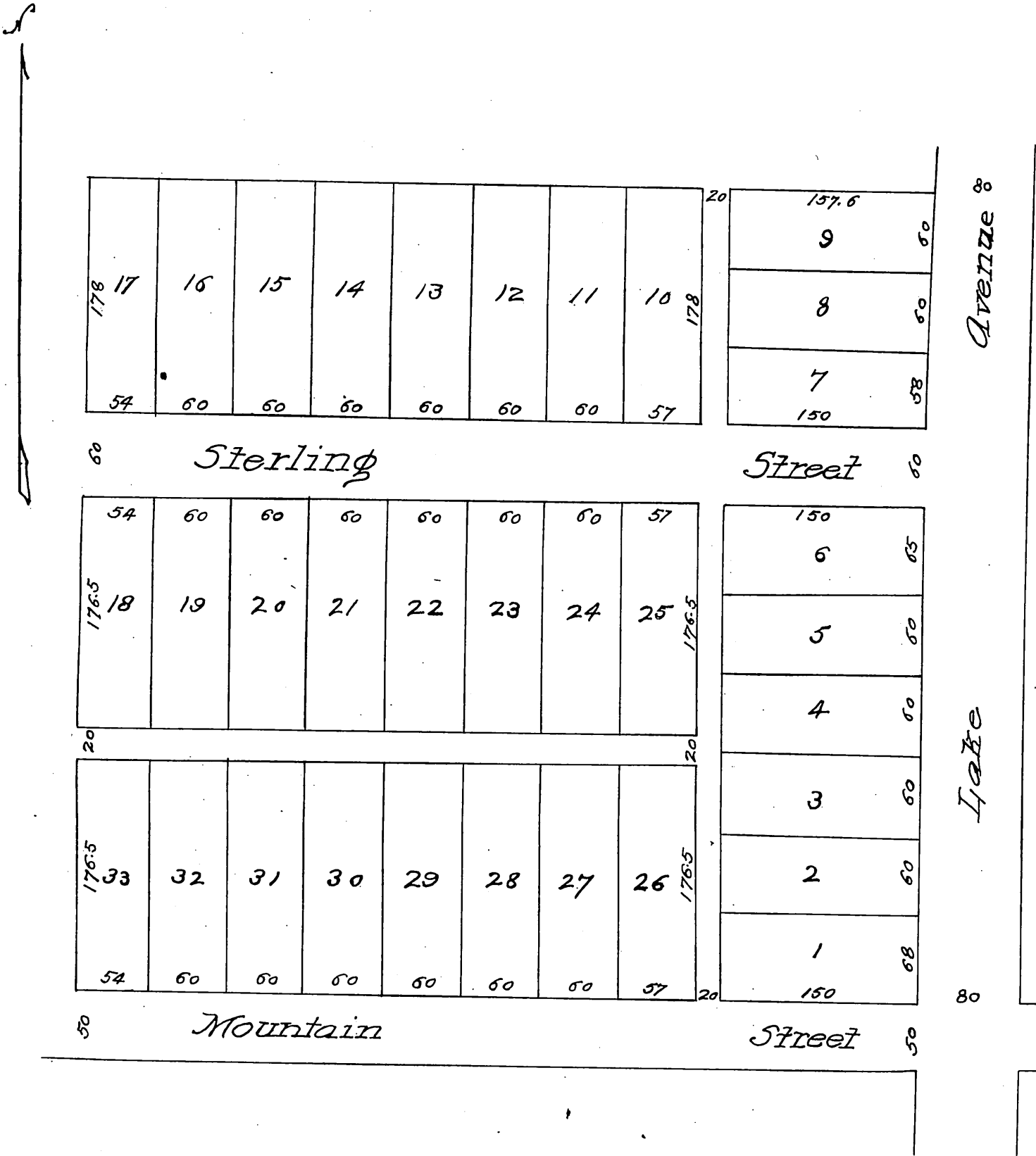


Sterling Tract

Being a
 Subdivision of the North
 west corner of Lake Ave.
 and Mountain Street.
 comprising ten acres.
 Pasadena, Los Angeles County, Cal.
 Scale 100 ft = 1 in.
 Sur. July '87. Riggs & Bro's Survs.



Recorded Sep 23, 1887.
 Request of W.H. Griffin & R. Green.

Vacation of Streets & Alleys 43-42

Conf. 11/11/87