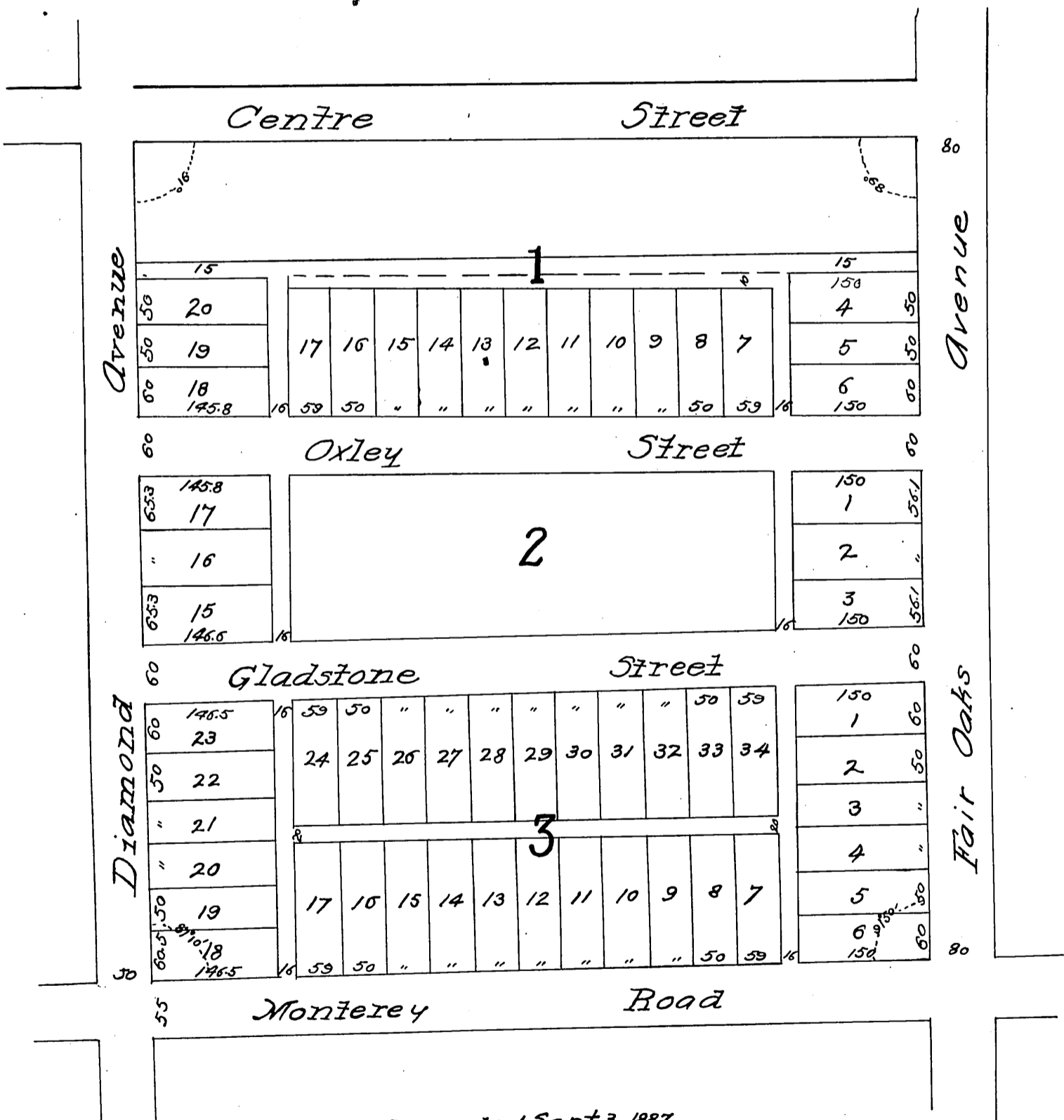


Plan of
Geo. Lightfoot's Subdivision

or division 14 of the San Gabriel Orange Grove
Association in the Rancho San Pasqual
South Pasadena, Cal.

S.D. Kendall, Surveyors

Aug. 1887.



Recorded Sept. 3, 1887.
Request of Geo. Lightfoot.

W 47.74' lot 15 Bk 1 D: 9-21 D: 3278-300
E 12.26' " 16 " 1 D: 9-21 D: 3278-300
W 47.74' " 15 " 1 D: 9-22 D: 3352-65
Center St. changed to El Centro D: 25-225-Res. 544
Vac. certain alleys D: 30-99 Ord. No 509
Alley W. of lots 4, 5, 6, changed to Hoperwell Lane D: 30-187
Throop Alley changed to Library Lane D: 38-210 Ord. 636

Completed
E.M.M.