

MAP

of Maguarrie & Sepulveda's Subdivision of the

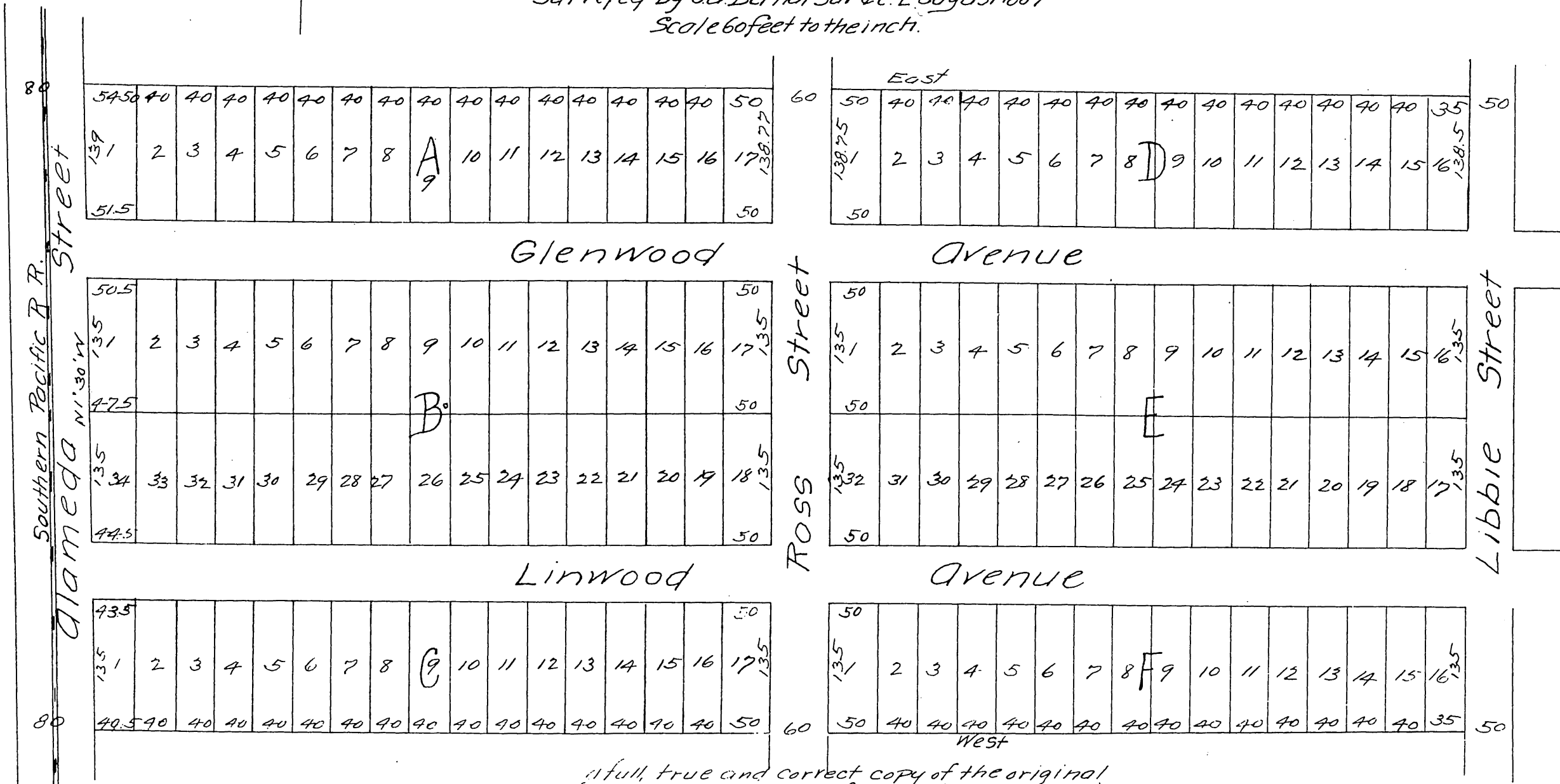
Ross Tract

N 1/2 of the N.W. 1/4 of the S.W. 1/4 of Sec 10 and part of Sec 9.

T. 2. S. R. 13. West S.B.M

Surveyed by J.A. Bernal Sur. & C. E. August 1887

Scale 60 feet to the inch.



A full, true and correct copy of the original
 (Reduced to the scale of 120 feet to one inch)
 Recorded September 7, 1887 at 11 25 A.M. at
 request of Maguarrie & Sepulveda.
 Frank G. Gibson County Recorder.
 By George Bugbee Deputy.