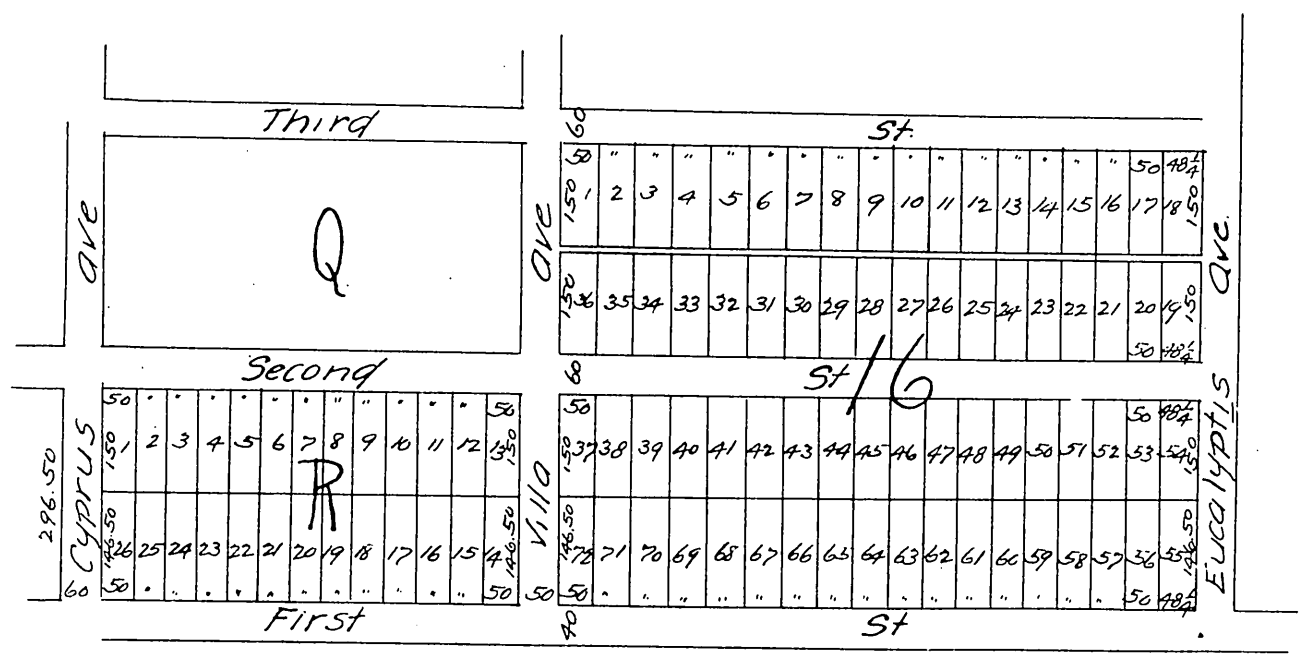


Harrison Curtis & Sweetser's
 Subdivision of Blocks R and 16 at
 "The Palms"
 Los Angeles County Cal.
 September 9, 1887.



Note: Block "R" in this plat should be recorded as Block "P"

A full, true and correct copy of the original
 recorded September 10, 1887 at 10th A.M. at
 request of Curtis and Sweetser.
 Frank A. Gibson County Recorder.
 By George Bugbee Deputy.