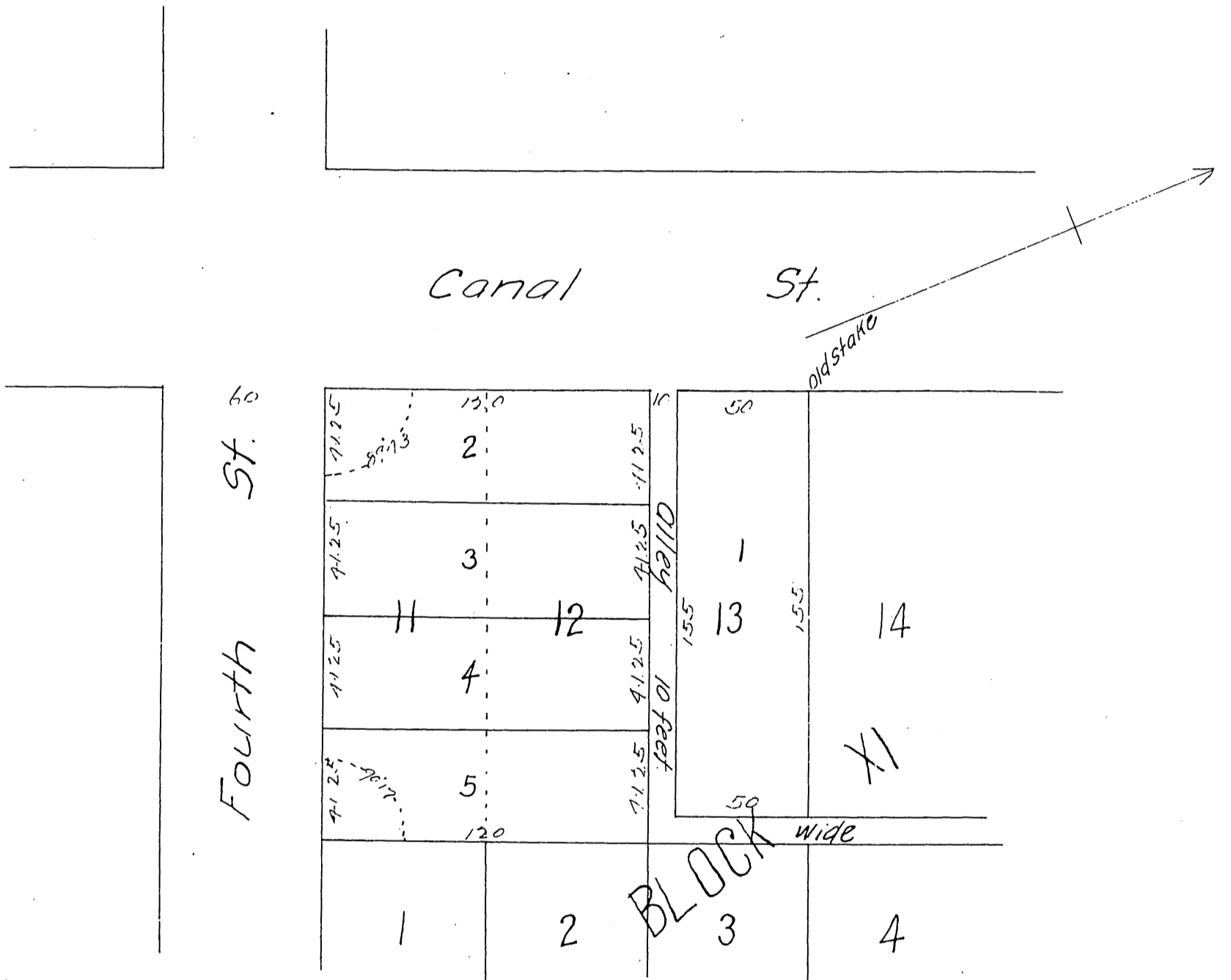


Plan  
 OF  
 Ball and Hanley's  
 Subdivision of Lots 11, 12 & Lot 13  
 Block XI Woolen Mill Tract  
 City of Los Angeles

Surveyed by P. B. Anderson & Co Civil Engineers & Surveyors.  
 Scale 40 feet to an inch



A full, true and correct copy of the original  
 (reduced to the scale of 50 feet to one inch)  
 recorded Sept 10, 1887 at 26 min past 1 P.M.  
 at request of R. Ball.

Frank A. Gibson County Recorder.  
 By George Bugbee Deputy.