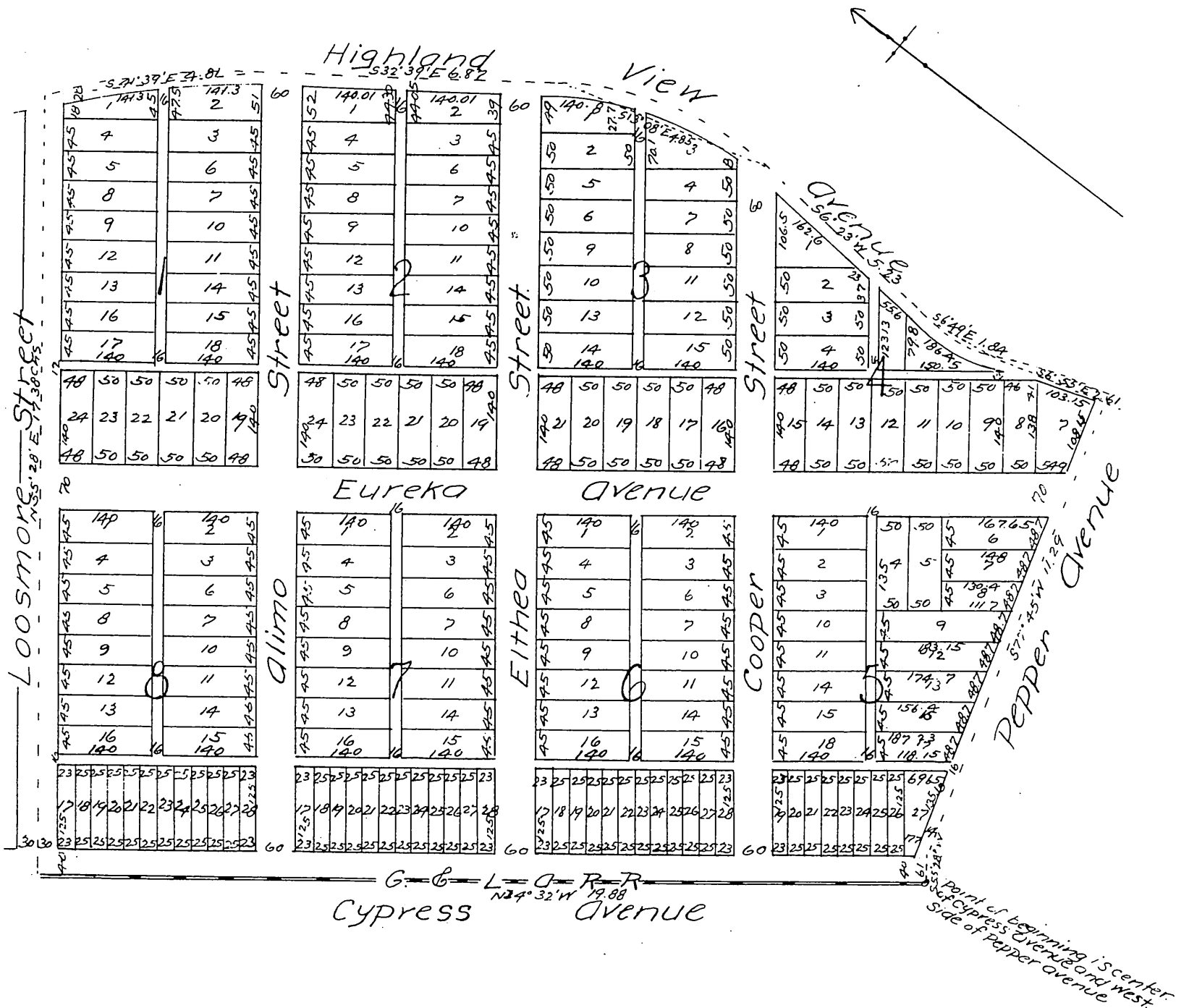


Mitchell & Embody's

Subdivision of the
Bennington Tract.
Los Angeles City, Cal.

Surveyed August 1887 by C.A. Boggess, Surveyor
Scale 100 feet per inch.



A full, true and correct copy of the original
(reduced to the scale of 200 feet to one inch)
recorded Sept. 10, 1887 at 52 min. past 2 P.M.
at request of W. S. Embody

Frank A. Gibson County Recorder.
By George Ingbee Deputy.