

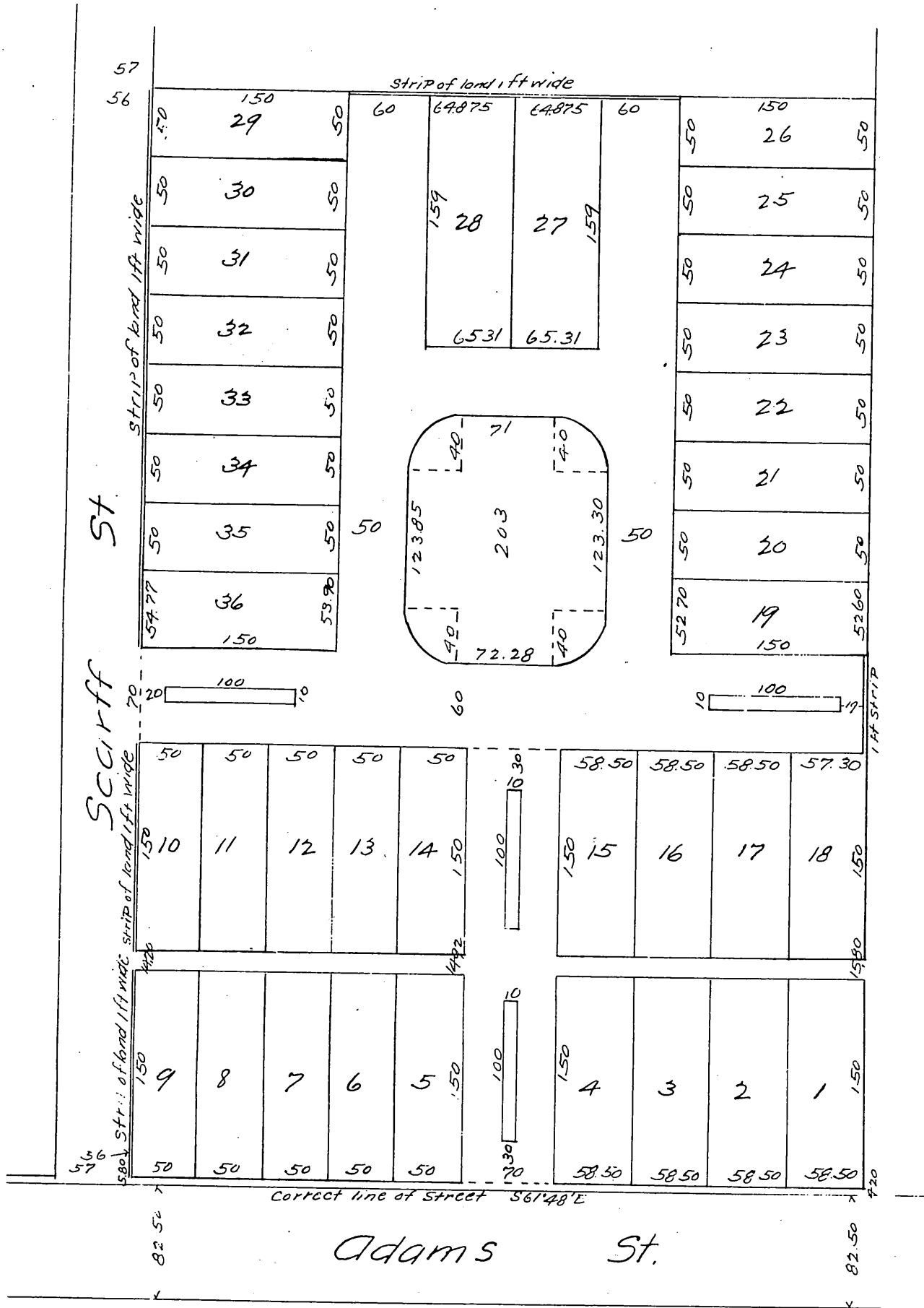
MAP

OF

St James Park

Being a subdivision of the Godfrey Tract
of 10 acres in Lot 7, Block 17 Hancock's Survey
Los Angeles City, Cal.

Surveyed Aug. 1887 by McClure Bros.
Scale 50 feet to 1 inch.



a full, true and correct copy of the original.
(Reduced to the scale of 100 feet to one inch.)
Recorded September 12 1887 at 7 min past
2 P.M. at request of J. Downey Harvey.
Frank A. Gibson County Recorder.
By George Dugbee Deputy.