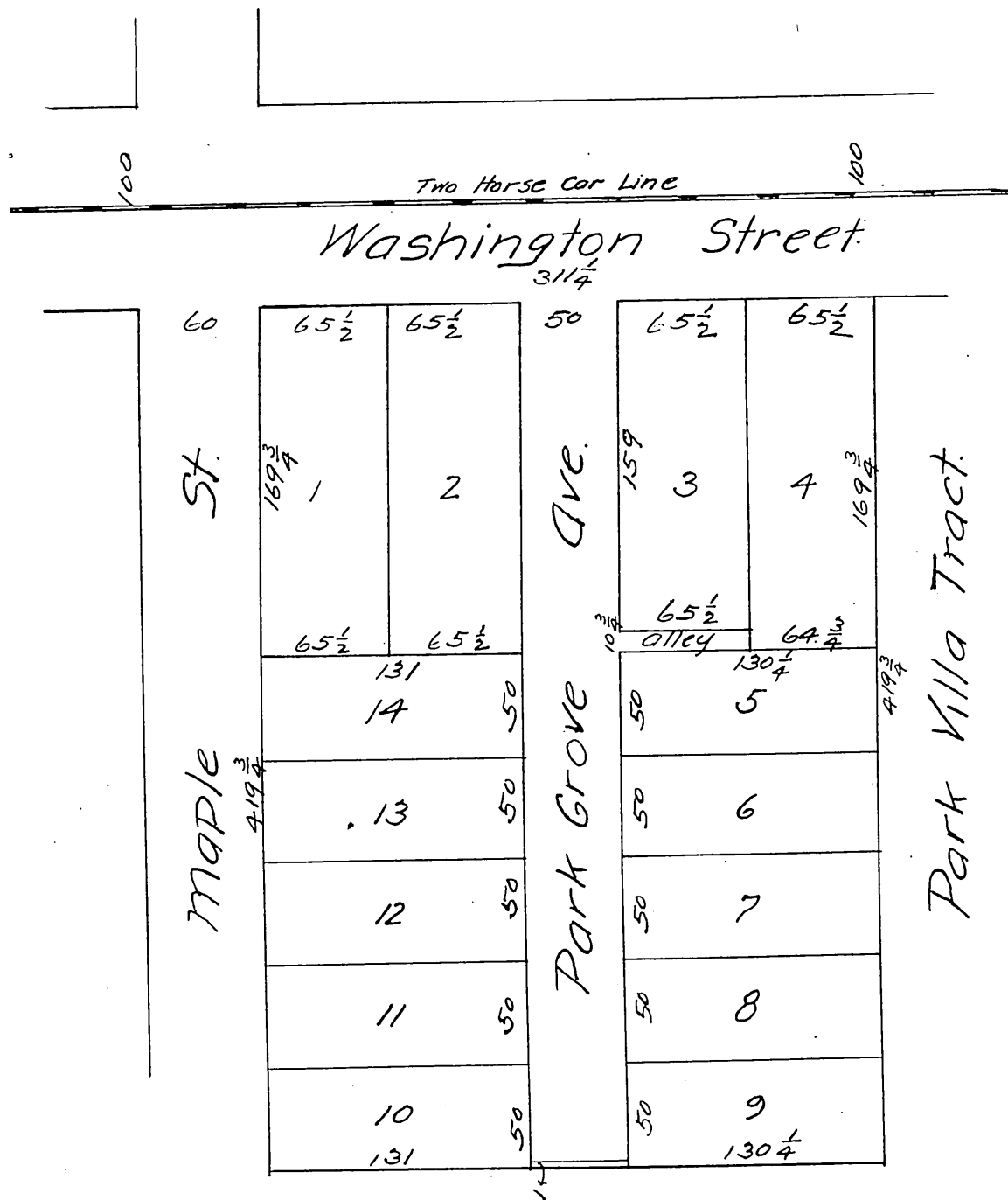


Park Grove Tract

Formerly Lots 1, 2 and 3 of the Pierce Tract

Surveyed by C.E. Jones C.E. Aug 1887.



A full, true and correct copy of the original.
(reduced to the scale of 80 feet to one inch)
recorded Sept. 13, 1887 at 55 min past 10 A.M.
at request of T. Wiesendanger.

Frank A Gibson County Recorder.
By George Bugbee Deputy.