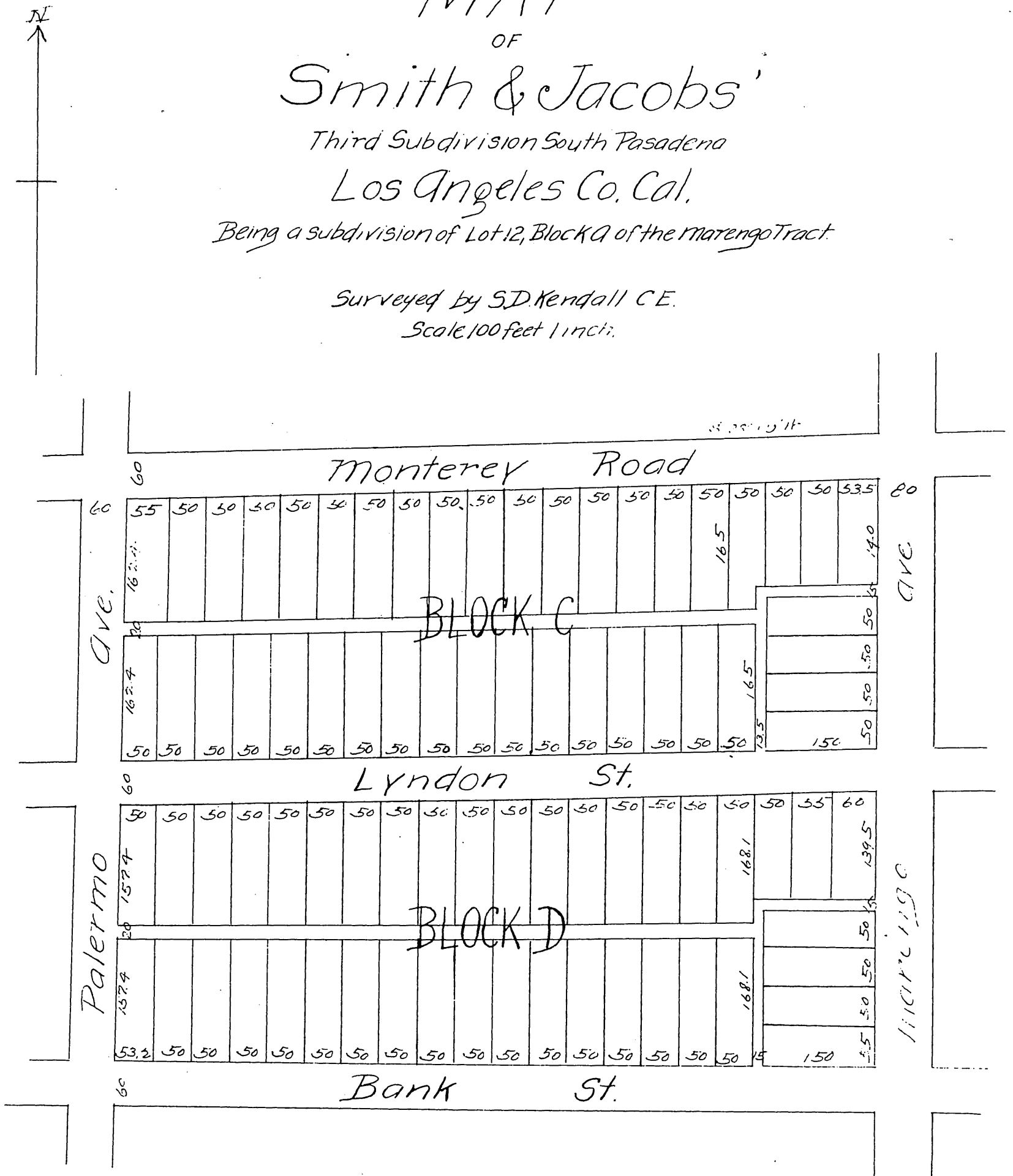


MAP
OF
Smith & Jacobs'
Third Subdivision South Pasadena
Los Angeles Co. Cal.
Being a subdivision of Lot 12, Block A of the Marengo Tract.

Surveyed by S.D. Kendall C.E.
Scale 100 feet 1 inch.



A full, true and correct copy of the original.
(reduced to the scale of 150 feet to one inch)
recorded Sept 13, 1887 at 55 min Past 10 O. M.
at request of John H. Jacobs.
Frank A. Gibson County Recorder
By George Bugbe, Deputy.