

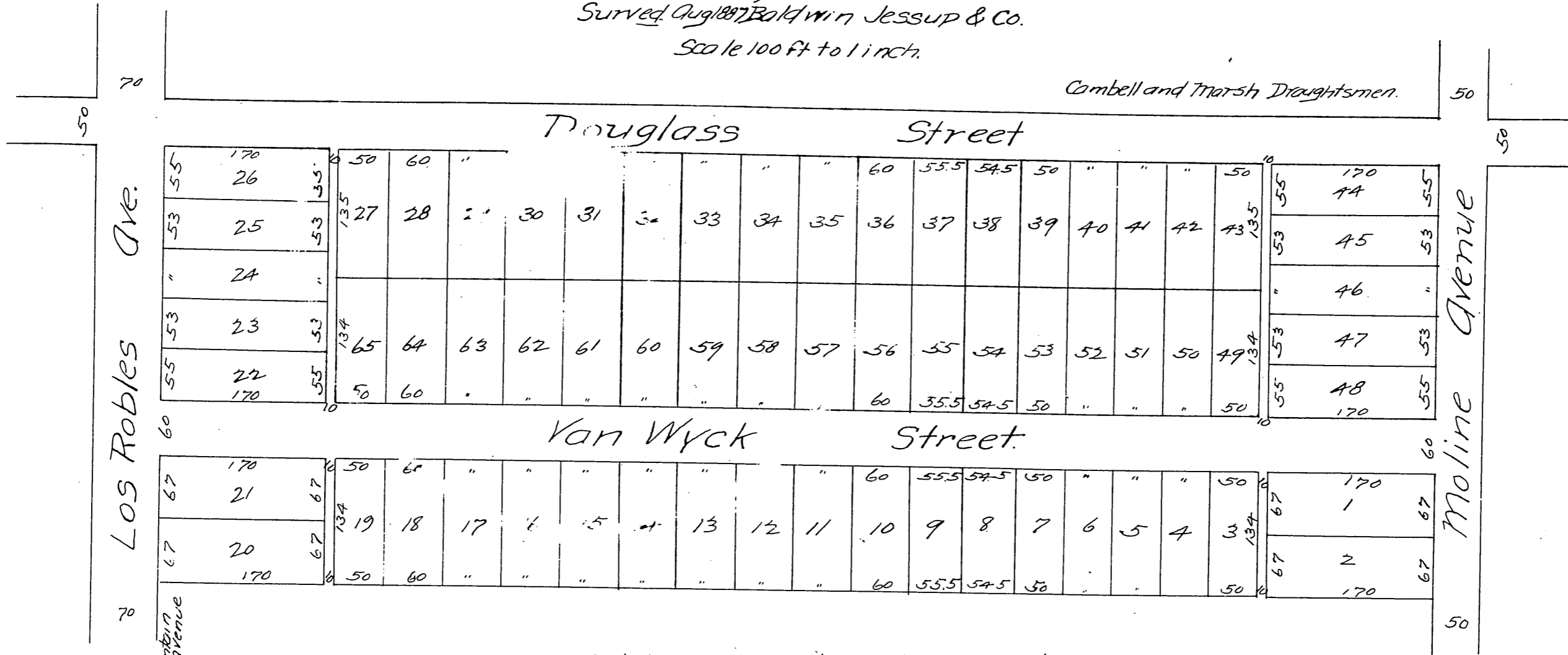
MAP

OF THE

Jennie Watts Tract

Being a subdivision of 14.033 Acres in the
central portion of Block "S" Painter and Ball Tract
Pasadena, Cal.

by
Surveyed Aug 1887 Baldwin Jessup & Co.
Scale 100 ft to 1 inch.



A full, true and correct copy of the original
(reduced to the scale of 120 feet to one inch.)
recorded Sept 13, 1887 at 21 min past 11. A.M.
at request of Baldwin Jessup.
Frank A. Gibson County Recorder.
BY George B. Budge Deputy.

10.28.85 ft North of Mountain Avenue