

M. Fish's Subdivision.

of Lots 5, 6, 7 & 8 in Swan and Riggs Subdivision.

Also South part of Lot 5 Block I.

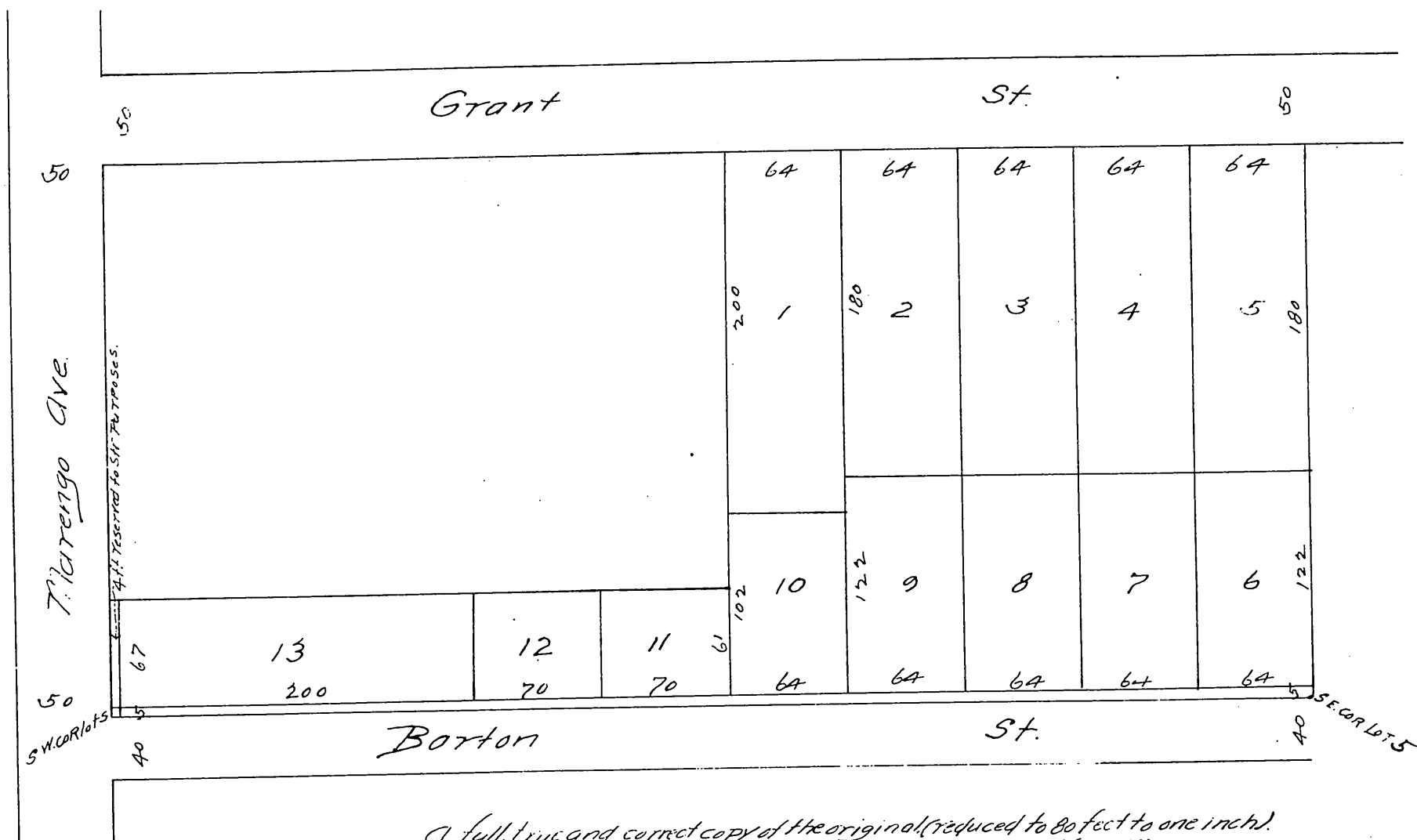
San Pascual Tract.

PASADENA, CAL.

Surveyed by Riggins Bros.

Scale 50 ft to 1 inch.

Campbell & Marsh Draftsmen.



A full, true and correct copy of the original (reduced to 80 feet to one inch).
 Recorded Sept 20th 1897 at 4:43 P.M. at request of Milford Fish.

From K. O. Gibson County Recorder,
 By George Bugbee Deputy.