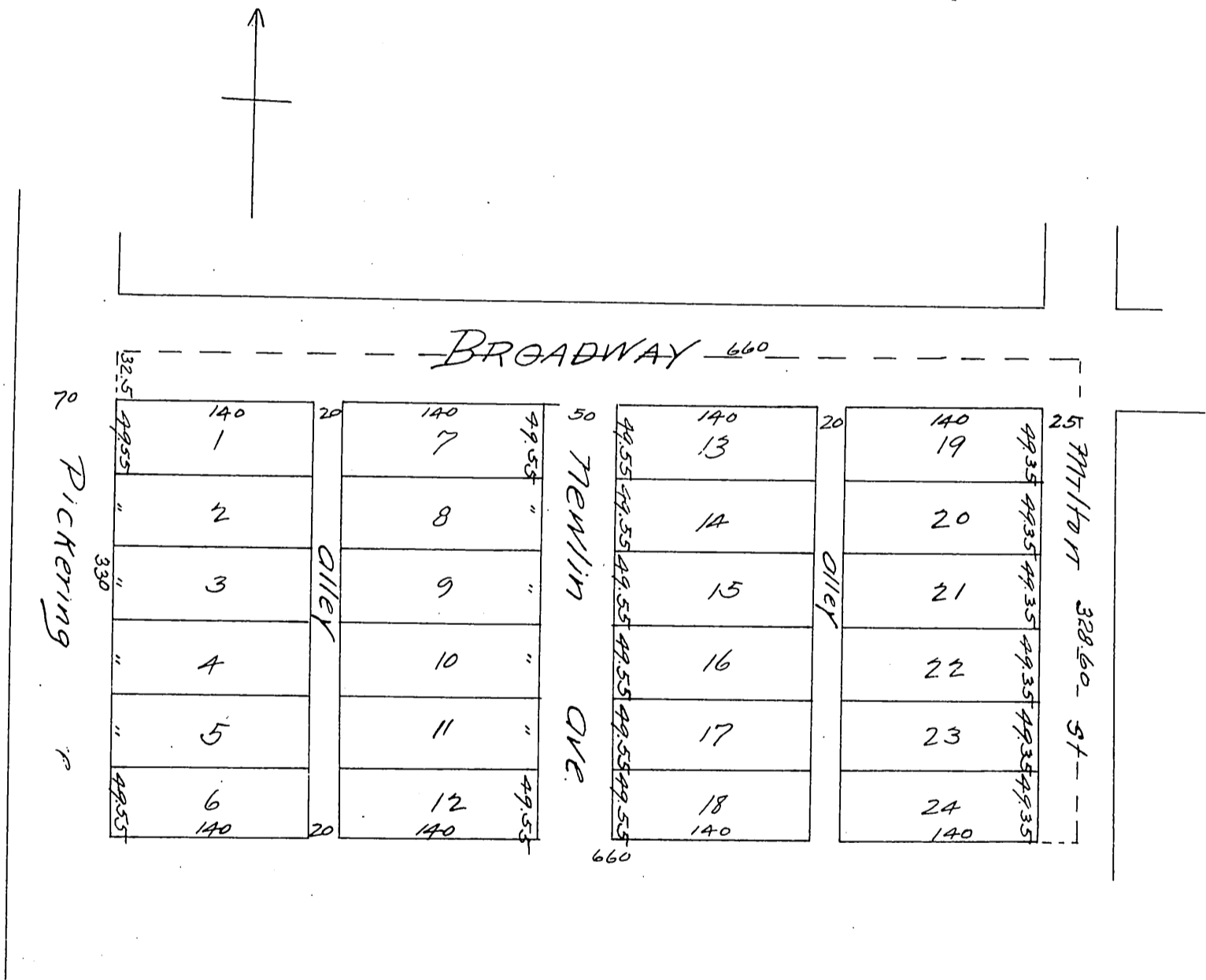




Dr C. M. Harlan's Subdivision
of Lot 12 in Block C of the Pickering Land Co's Subdivision
of the
John M. Thomas Rancho.
Los Angeles Co. Cal.
Surveyed by John Leonard Sept, 1887.
Scale 100 ft to one in.



A full, true and correct copy of the original recorded Sept 24th
1887 at 9:50 a.m. at request of C. M. Harlan.

Frank O Gibson County Recorder.
By George V. Lugoee Deputy.

Note the lot numbers on this map were
in red pencil on the original.
Recorder: