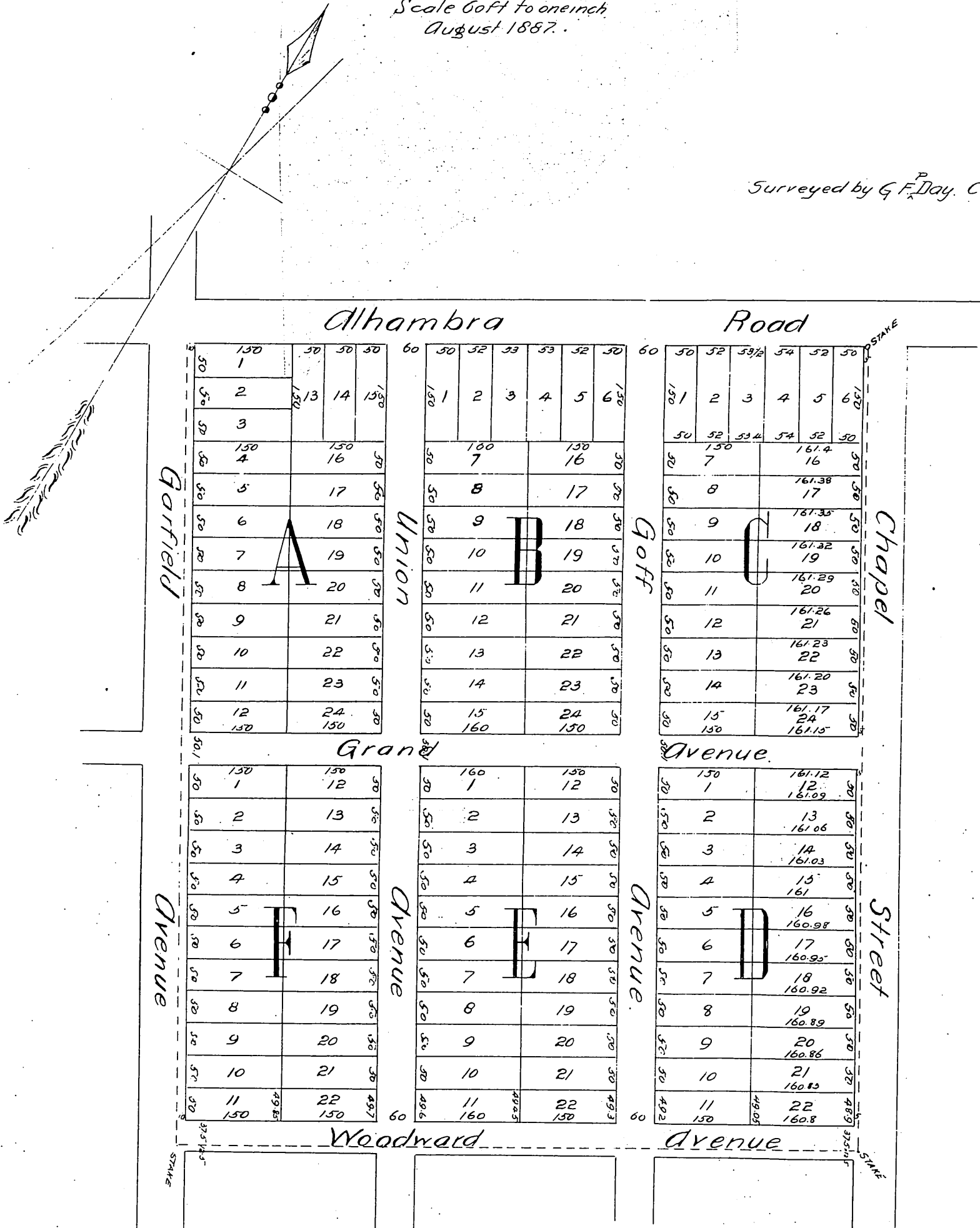


**PLAN**  
 of  
**H. W. STANTON'S SUBDIVISION**  
 of the  
**M. GOFF TRACT.**  
**ALHAMBRA LOS ANGELES CO.**  
 California.

Scale 60ft to one inch  
 August 1887.

Surveyed by G. F. Day, C.E.



A full, true and correct copy of the  
 original reduced to 1/3 size, recorded  
 Sept 28, 1887 at 2:39 P.M. at request of  
 H. W. Stanton  
 Frank A. Gibson, County Recorder.  
 By George Bugbee Deputy.