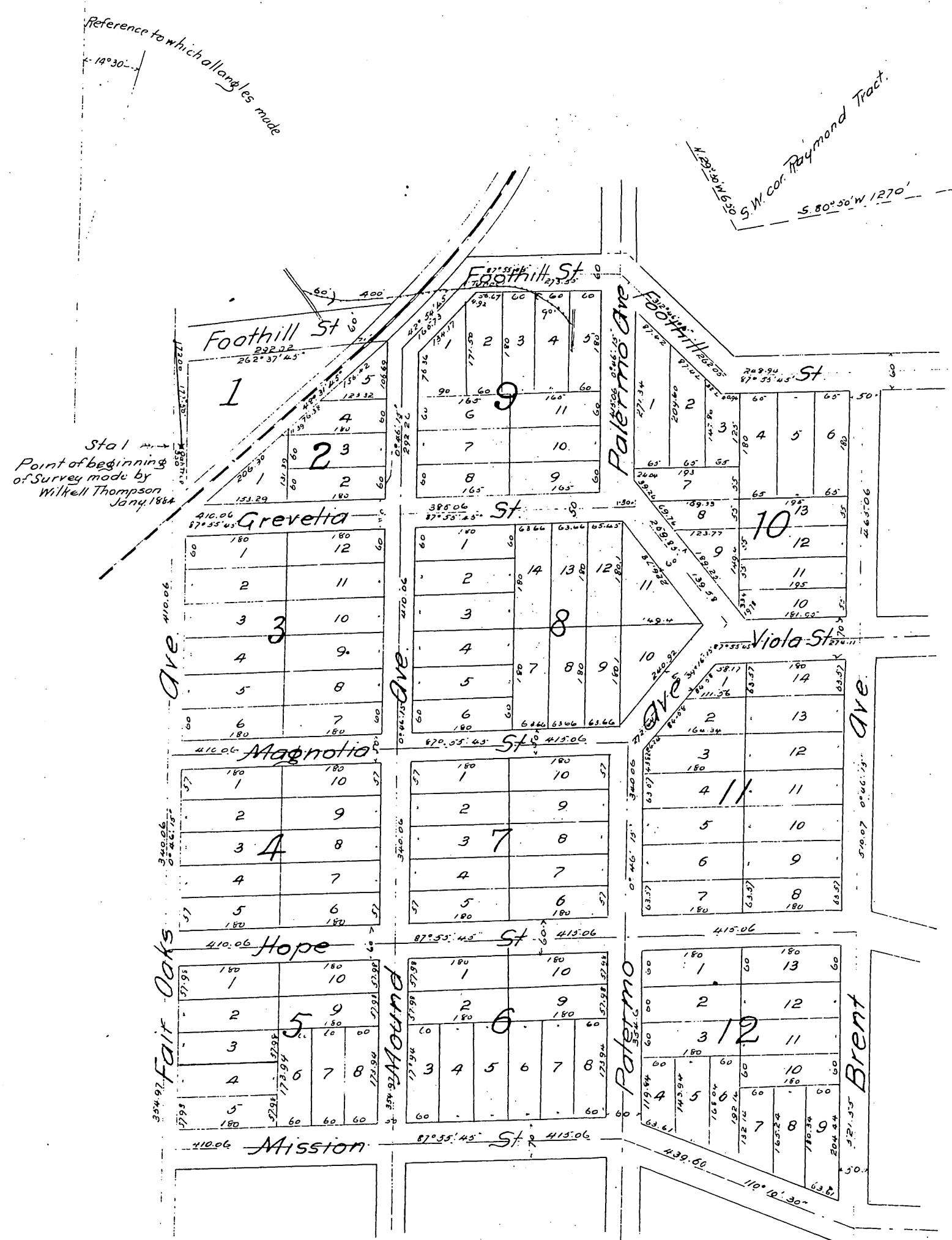


# Map OF DIVISION No 1 of the RAYMOND IMPROVEMENT CO. TRACT.

being a part of  
MARENGO TRACT L.A. CO. CAL.

Surveyed in March 1887 by Fred Eaton. C.E.

Scale 200ft to linch.



All streets delineated on this map are expressly reserved as private property of the Raymond Improvement Company and shall so remain until said company shall have sold all the lots in Division No 1, but they may be used by each purchaser of lots or his assigns as private rights of way.

A full, true and correct copy of the original recorded Sept. 29, 1887 at 10:32 A.M. at request of W.G. Hughes.

Frank A. Gibson County Recorder.  
By George Bugbee Deputy.

Raymond Improvement Company  
by its President D. M. Farland  
and its Secretary W.G. Hughes.