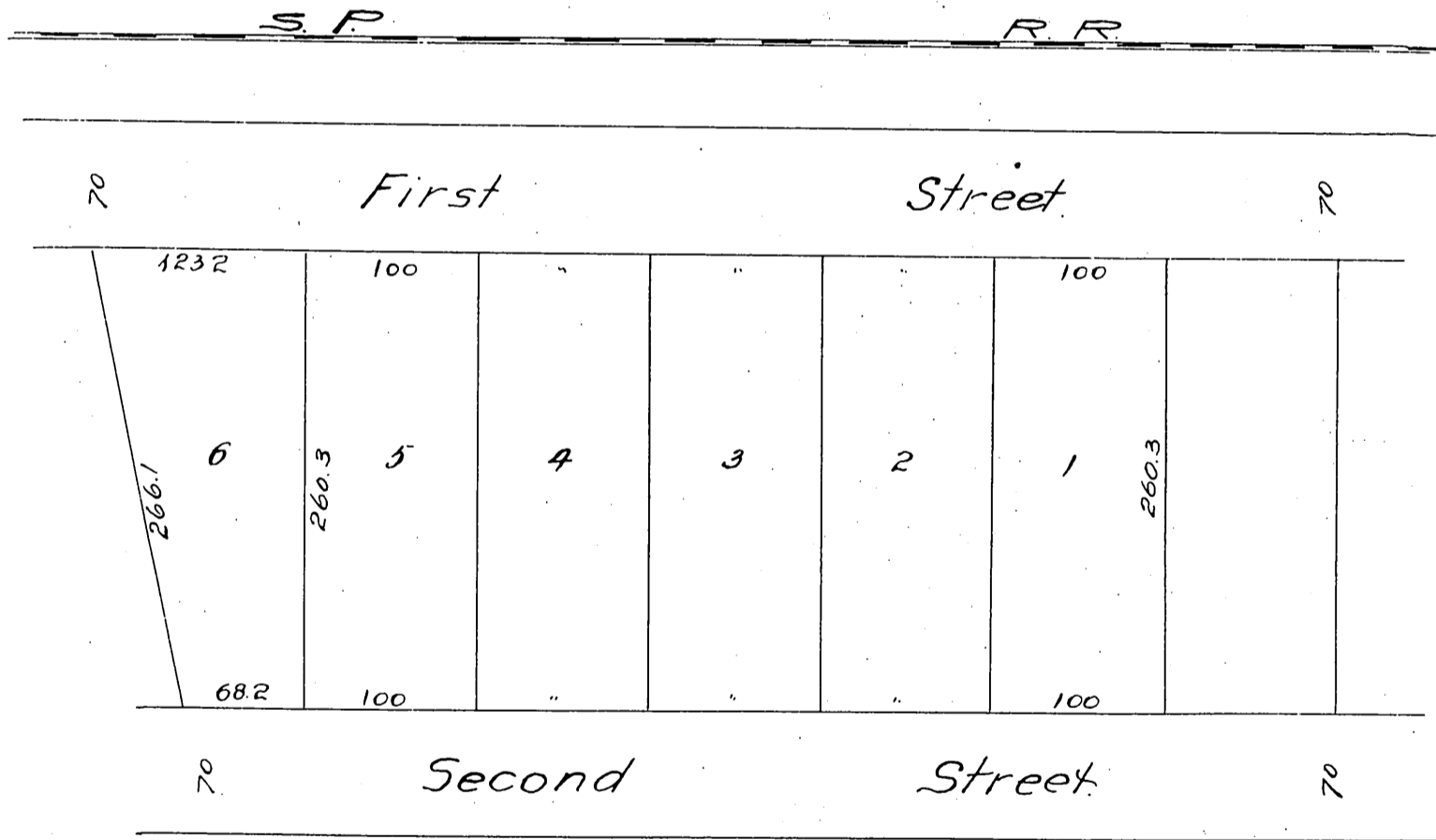


MAP
 OF
 Kessler, Stanchfield & Co's
 Subdivision^S north 5 acres of block 228.
 POMONA TRACT.
 Surveyed in Aug. 1887, by H.E. Stoddard, C.E.
 Scale 50ft to 1 inch.



*In lieu of former map filed for record
 of block 223 Error being in the No of the block*

*A full, true and correct copy of the
 original, reduced to 1/2 size recorded
 Sept. 29, 1887 at 10:50 AM at request of
 H. E. Stoddard.
 Frank O. Gibson County Recorder
 By George Baugbee Deputy.*