

2419

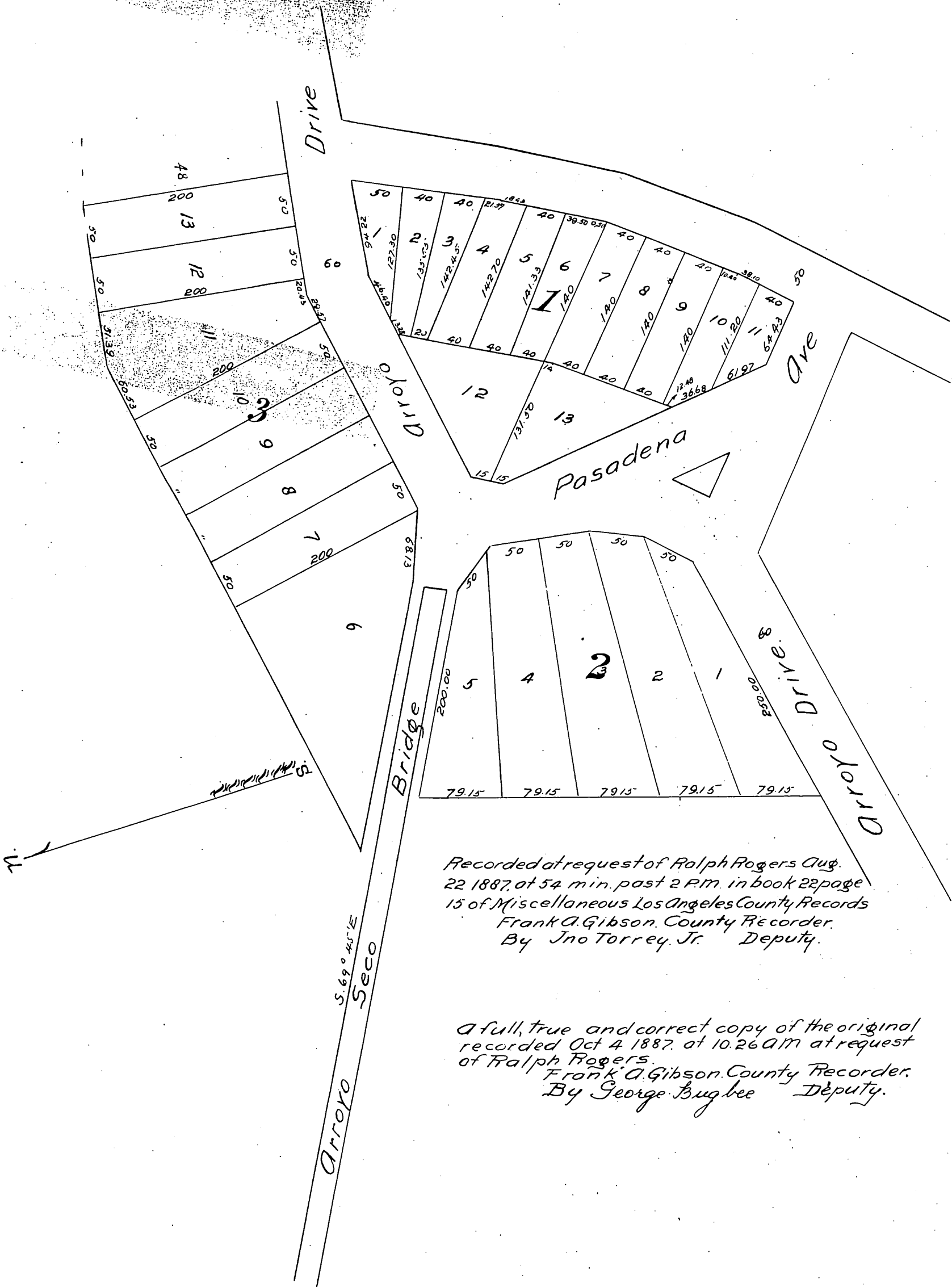
MAP

OF

Ralph Rogers's Resubdivision

Of Lots 3, 4, 5, 6, 7, 8, 9 of the
Lincoln Park Tract
And the east portions of lots 93 to 100 inclusive of the
Arroyo Wood Lots
Los Angeles Co Cal.

McClure Bros
Surveyors.



Recorded at request of Ralph Rogers Aug.
22 1887, at 54 min. past 2 P.M. in book 22 page
15 of Miscellaneous Los Angeles County Records
Frank A. Gibson, County Recorder.
By Jno Torrey, Jr. Deputy.

A full, true and correct copy of the original
recorded Oct 4 1887, at 10.26 AM at request
of Ralph Rogers.
Frank A. Gibson, County Recorder.
By George Bugbee Deputy.