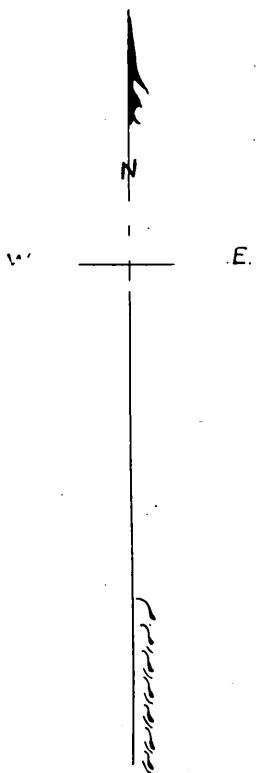
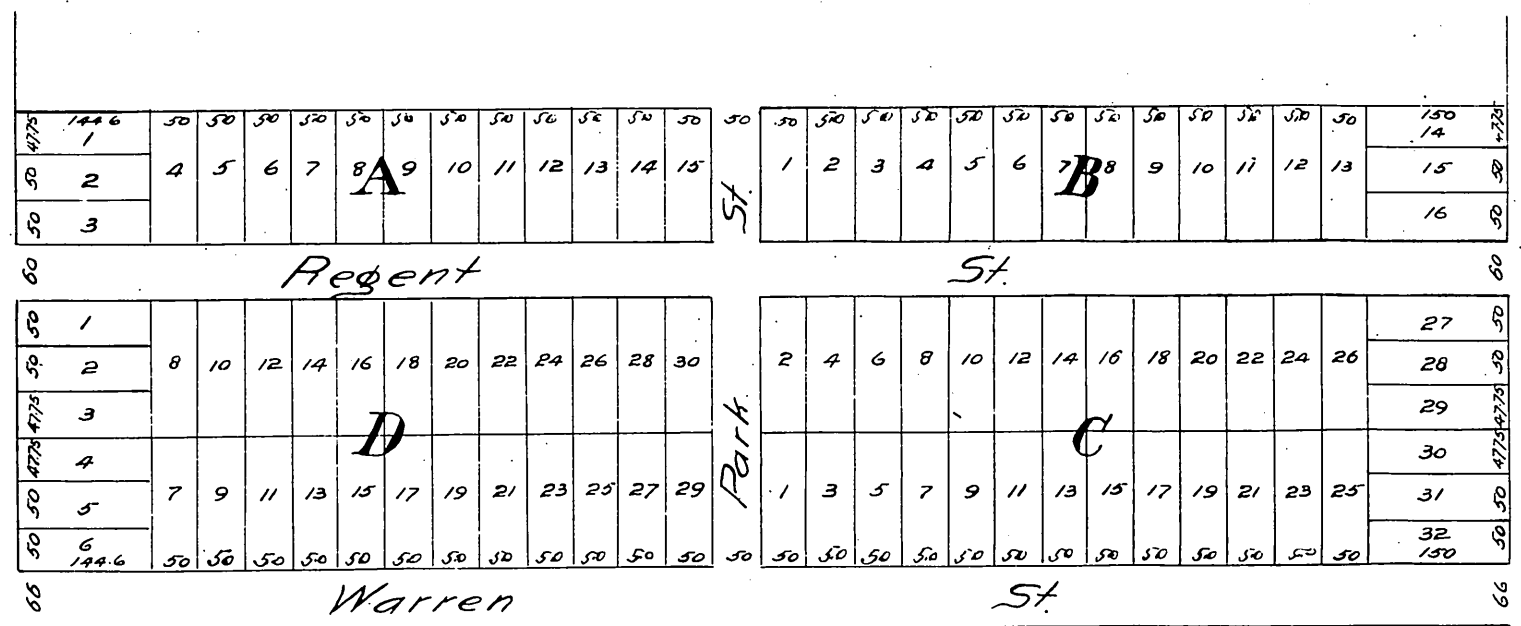


HUBBARD TRACT

RO. SANTIAGO DE SANTAANA

Description:- Commencing 97 1/2 rds. S. of the NW cor. of Sec. 17 T. 5. S. R. 9. W. S. B. M. thence S. 32 1/2 rds. thence E. 98 1/3 rds. thence N. 32 1/2 rds. thence W. 98 1/3 rds. to the place of beginning.



Notes.
 Commence 30ft. East of the above place
 of beginning for the N.W. corner of Lot 1 Block A.
 Surveyed & Mapped Sep. 1887
 by
 S. H. Finley.

*A full true and correct copy of the original, recorded Oct 4, 1887, at 3.27 P.M. at request of Robert Turner.
 Frank O. Gibson County Recorder.
 By George Bugbee, Deputy.*