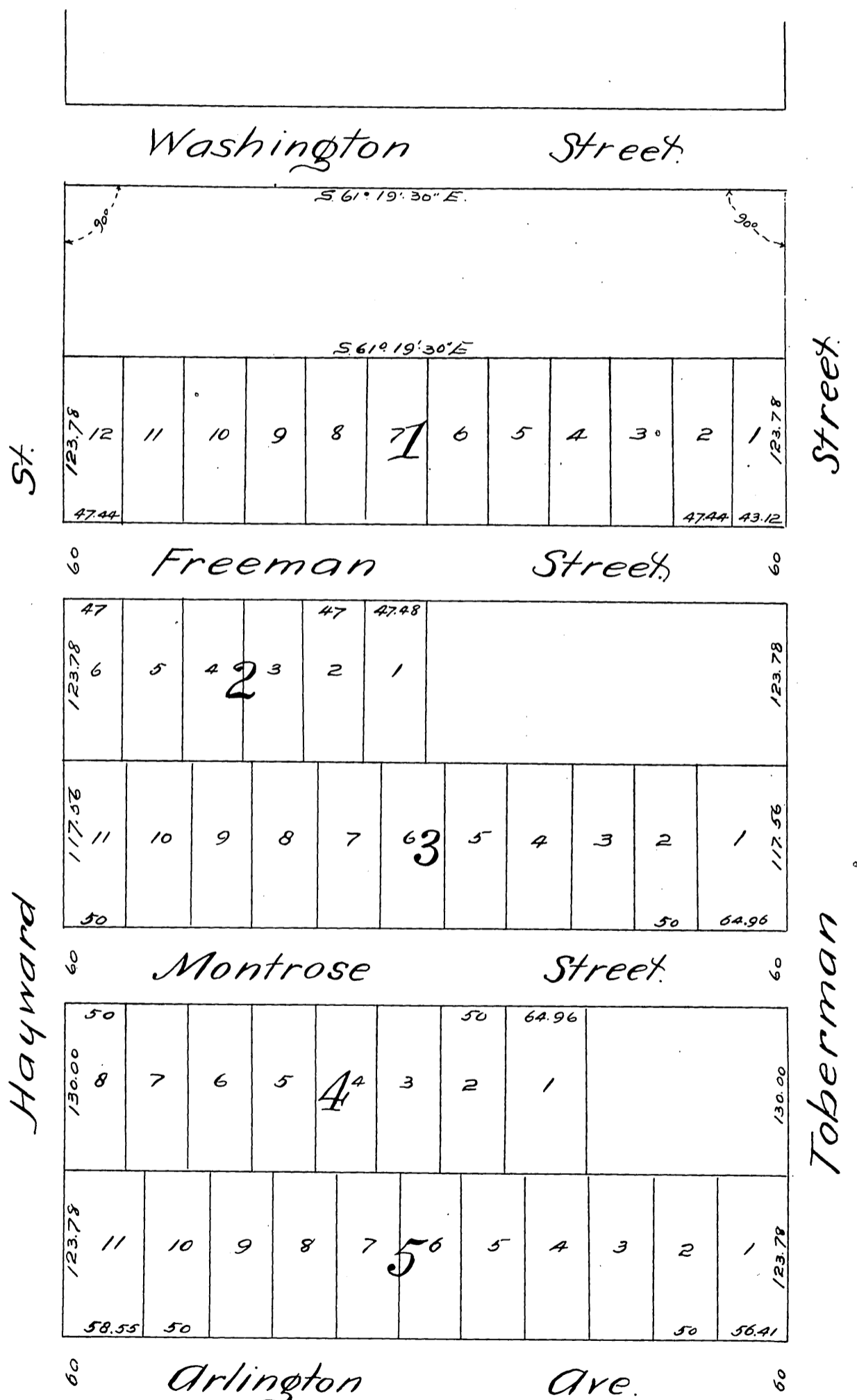


An
Amended map of the
Washington Villa Tract
Being Macdonald & Zellners Subdivision of Lots 11
12, 14, 19, 20, 21, 22, 26 and 27 of the
Hoover Tract
of the City of
Los Angeles.



St.

Street

Hayward

Toberman

A full, true and correct copy of the
original, recorded Oct. 5, 1887, at 3.12 P.M.
at request of R. Zellner.
Frank A. Gibson County Recorder.
By George Pugh Deputy.