

Knight Tract.

PROPERTY OF

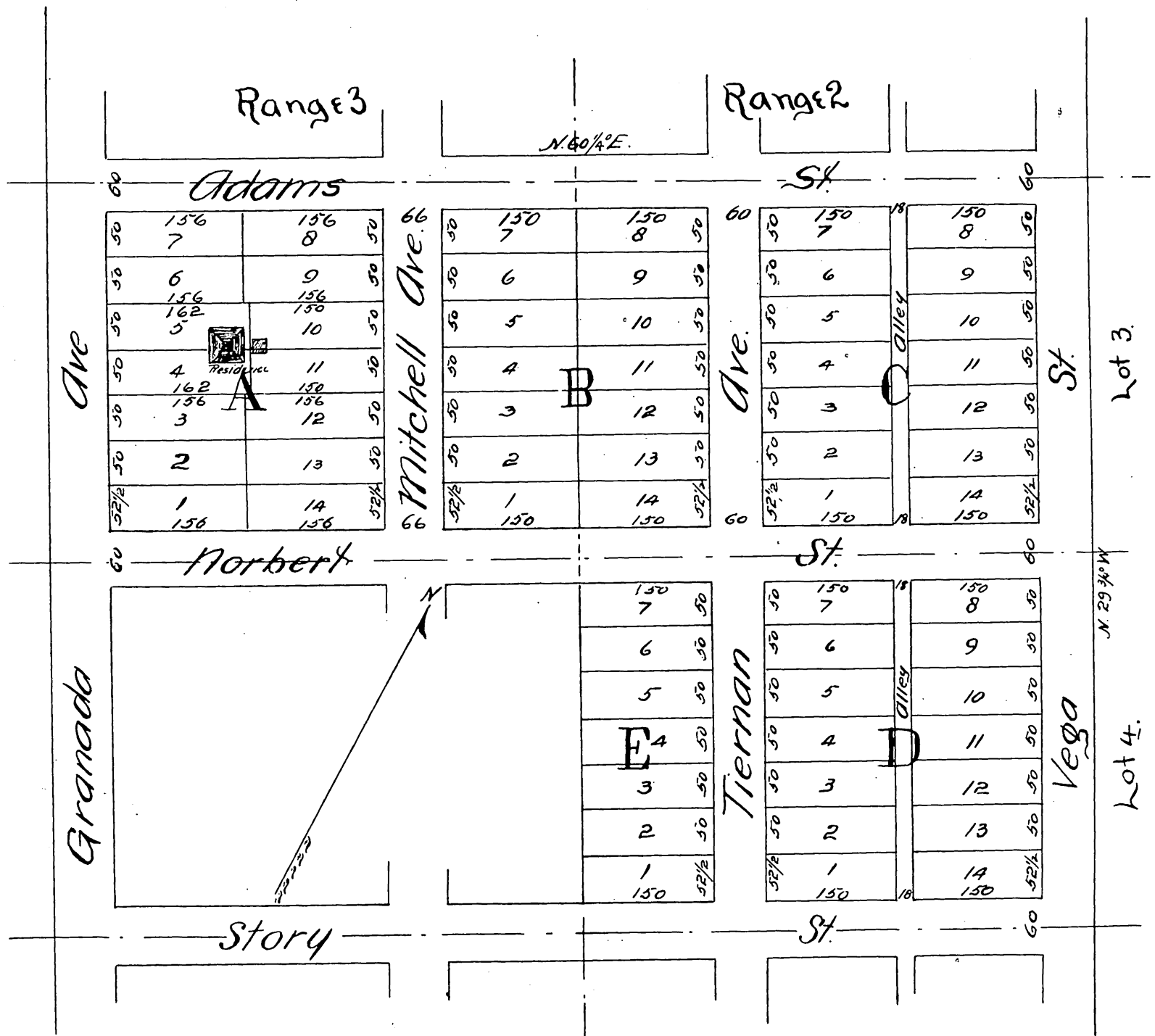
J De Barth Shorb

Being the Subdivision of Lots 3 and 4 Range 2 and lots Range 3

ALHAMBRA TRACT.

Surveyed by Gervaise Purcell C.E.

Scale 100 feet to 1 inch.



A full, true and correct copy of the original
 reduced to a scale of 150 feet to the inch, re-
 corded Oct 5, 1887, at 4.07 P.M. at request
 of J. M. Tiernan
 Frank O. Gibson County Recorder
 By George Bugbee Deputy.