

Aldrich & Hotaling's Subdivision

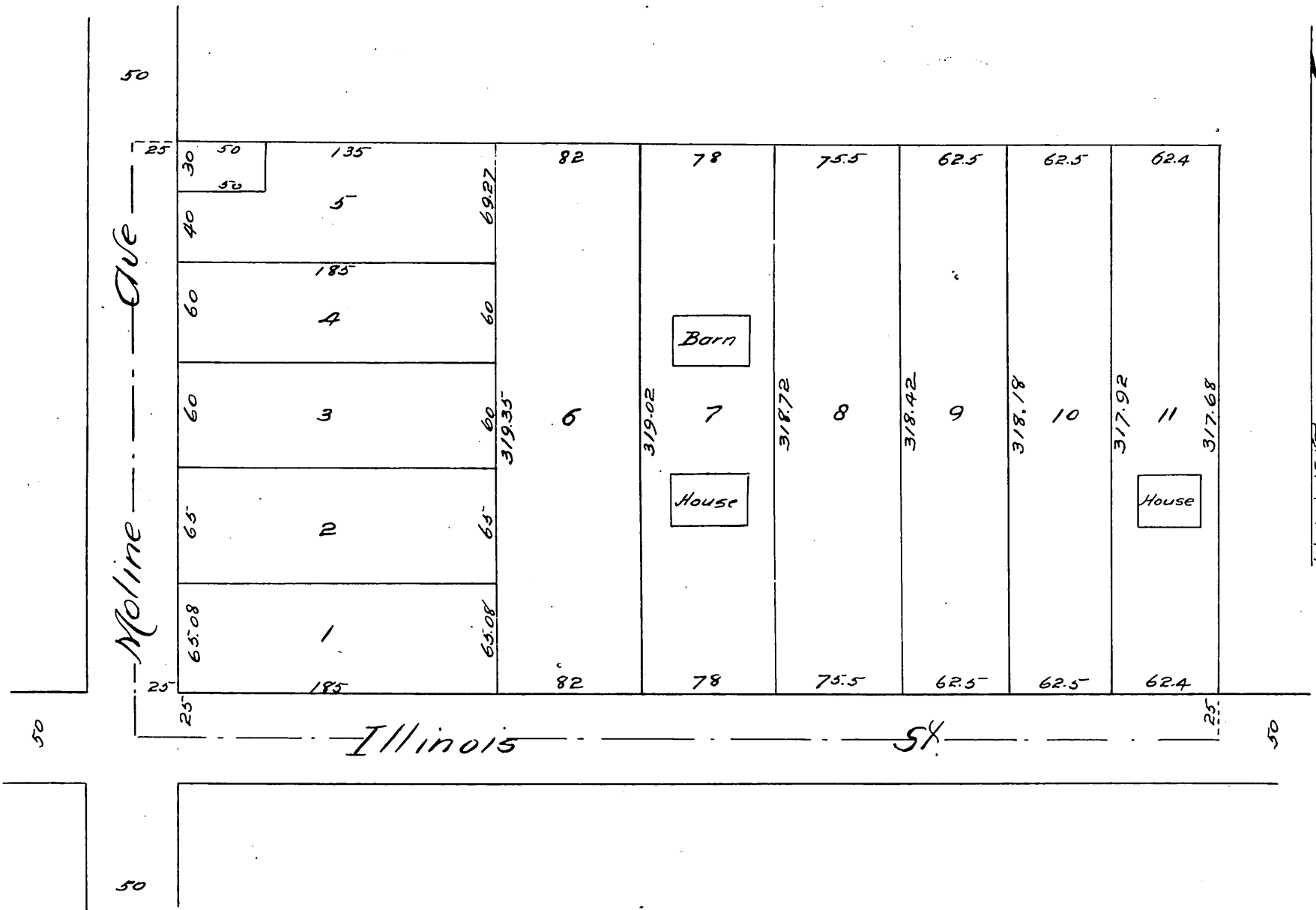
of 5 acres being a part of the A.B. Grogan Tract

of lands in the

Rancho San Pasqual

Surveyed Aug. 1887

By
Place & Pieper, C.E.s.



A full true and correct copy of the original recorded
 Oct 6. 1887 at 11th A.M. at request of Aldrich & Hotaling
 Frank A. Gibson County Recorder,
 by George Bugbee Deputy.