

MAP OF Goldsworthy & Chronis' Subdivision of the

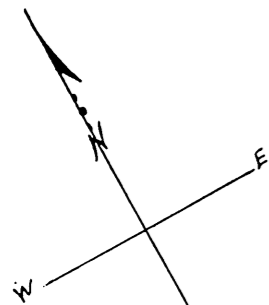
Clement Tract

on Pine and San Pedro Streets in the City of Los Angeles.

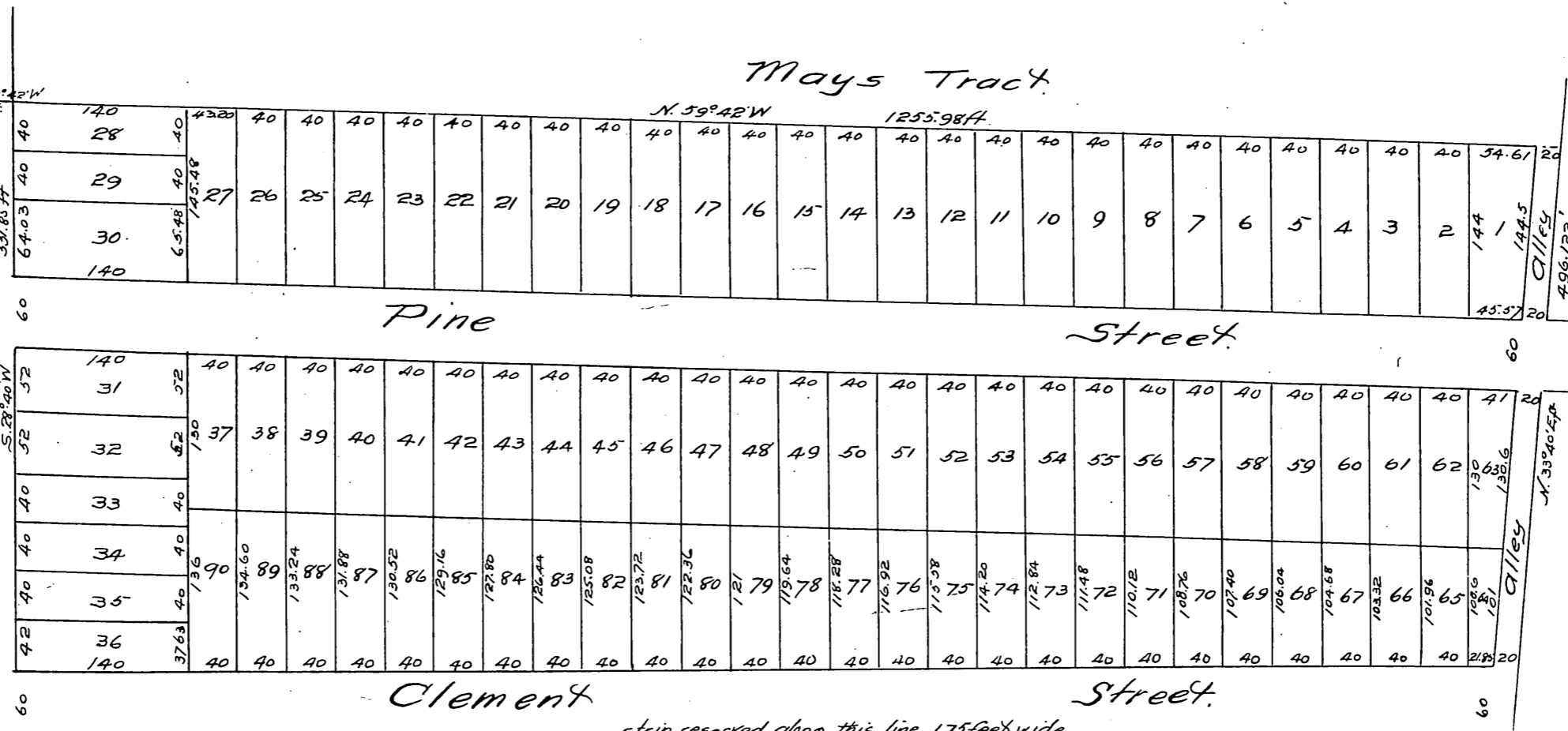
Surveyed by John Goldsworthy, Sept. 1887

Scale 100ft to the inch.

All measurements are in feet.



Stone official center of San Pedro St.
Stone official center of Washington St.



strip reserved along this line 1.75 feet wide
S 61° 30' E 2115.248 ft

See Note

A full, true and correct copy of the original recorded Oct. 7, 1887
at 4:27 P.M. at request of John Goldsworthy.
Frank A. Gibson, Co. Recorder.
by George Bugbee Deputy.