

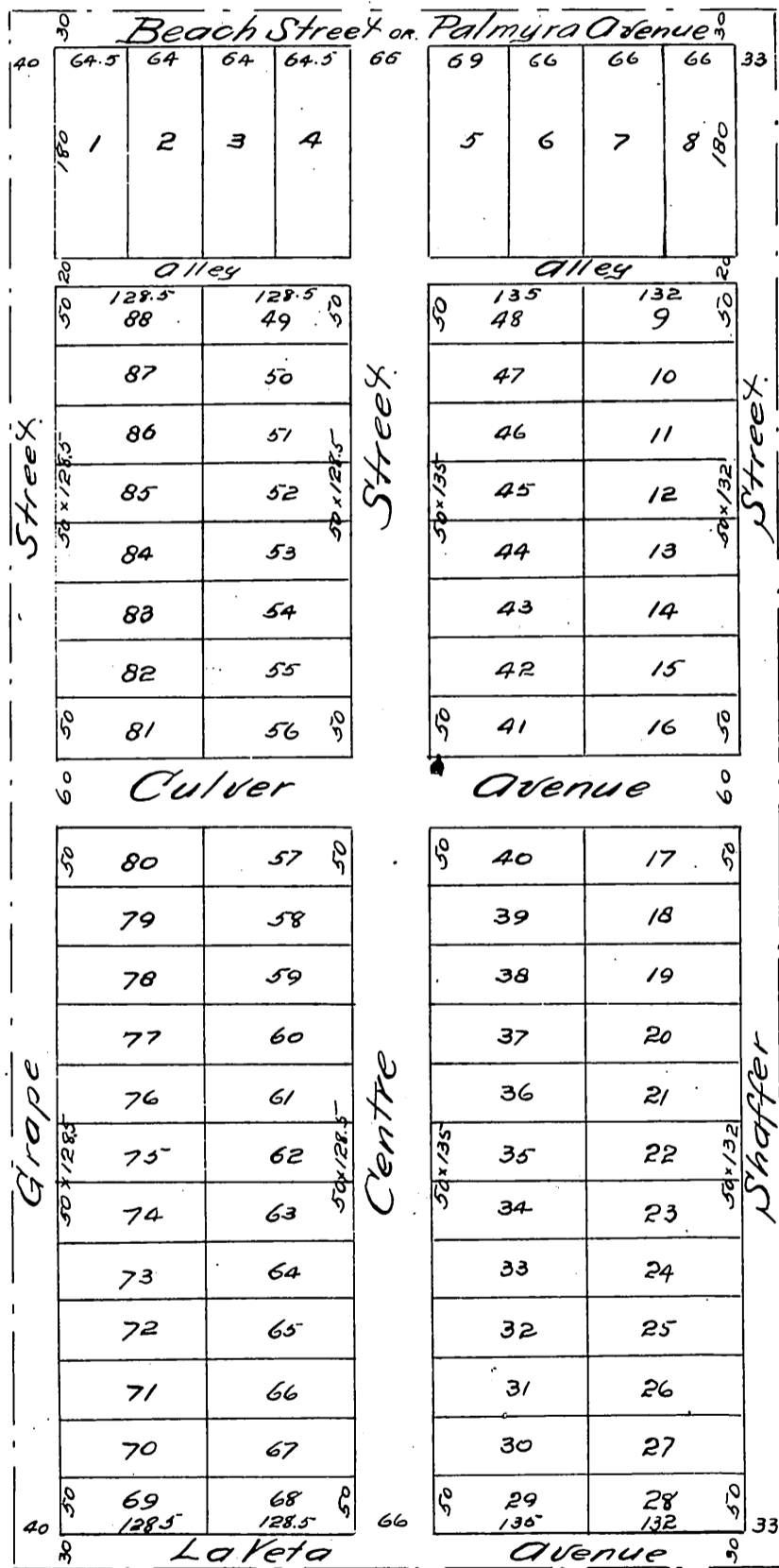
# Plat of the Palmyra Tract. ORANGE

Being the Subdivision of Lots 41 & 42 of the Richland Farm Lots,  
Rancho Santiago de Santa Ana,  
Los Angeles Co, Cal.

Surveyed by William Bathgate.

September 1887.

Scale 1 inch = 100 feet.



A full true and correct copy of the original (reduced to the scale of 150 feet to one inch) recorded October 10<sup>th</sup> 1887 at 11<sup>30</sup> A.M. at request of L. Thorne

Frank A. Gibson County Recorder.  
by George Bugbee Deputy.