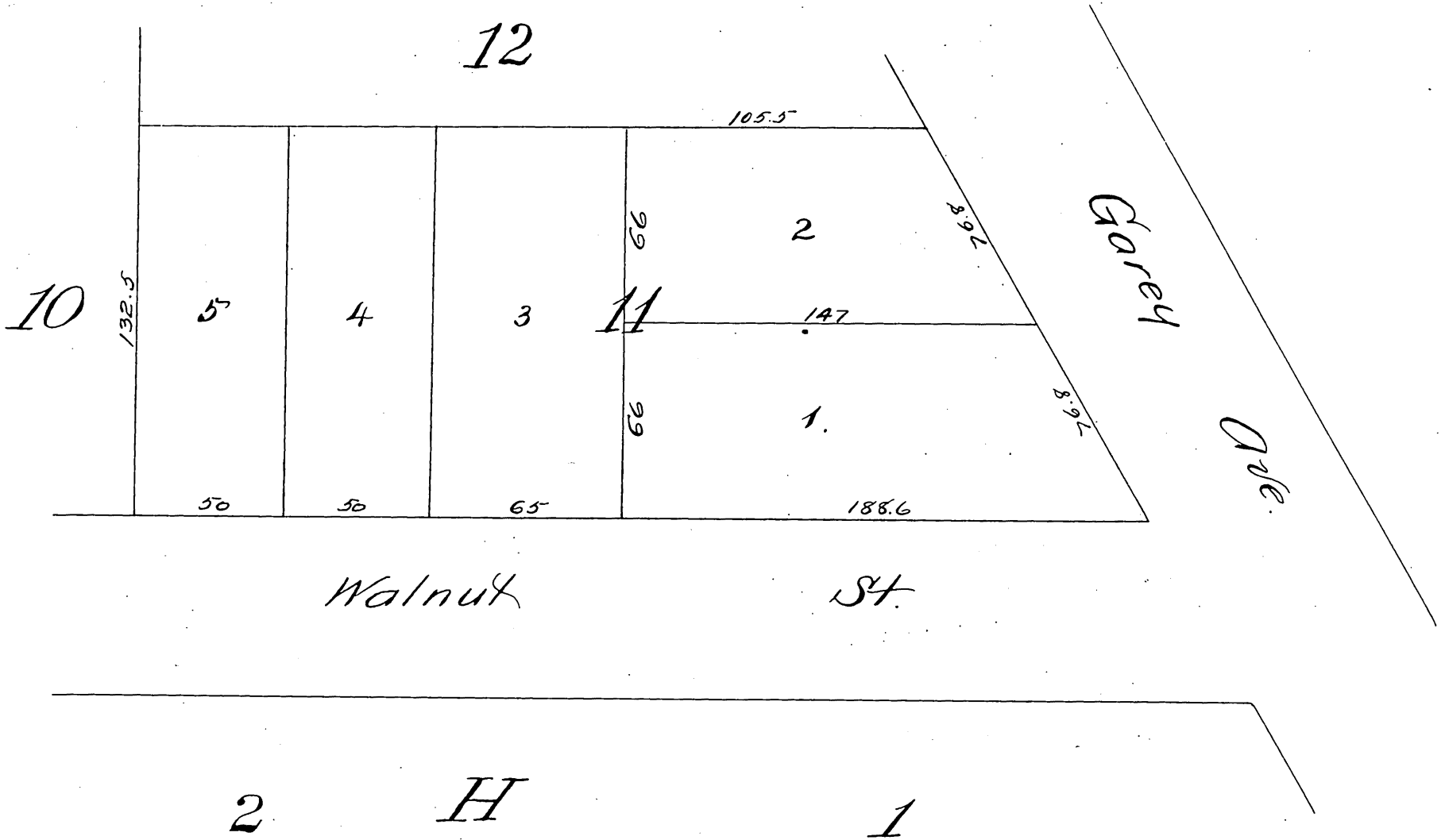


*Storrs' Subdivision*  
*of Lot M Block G,*  
*of Pomona Land & Water Co's Subdiv'n*  
*of Palomares Tract,*  
*Rancho San Jose.*  
 Scale 50ft to 1 in.



A full true and correct copy of the original recorded Oct 10 1887  
 at 39 min past 11 A.M. at request of Pomona Land & W. Co.

Frank A. Gibson, County Rec. c. r.  
 by George Bugbee Deputy