

Highland Tract

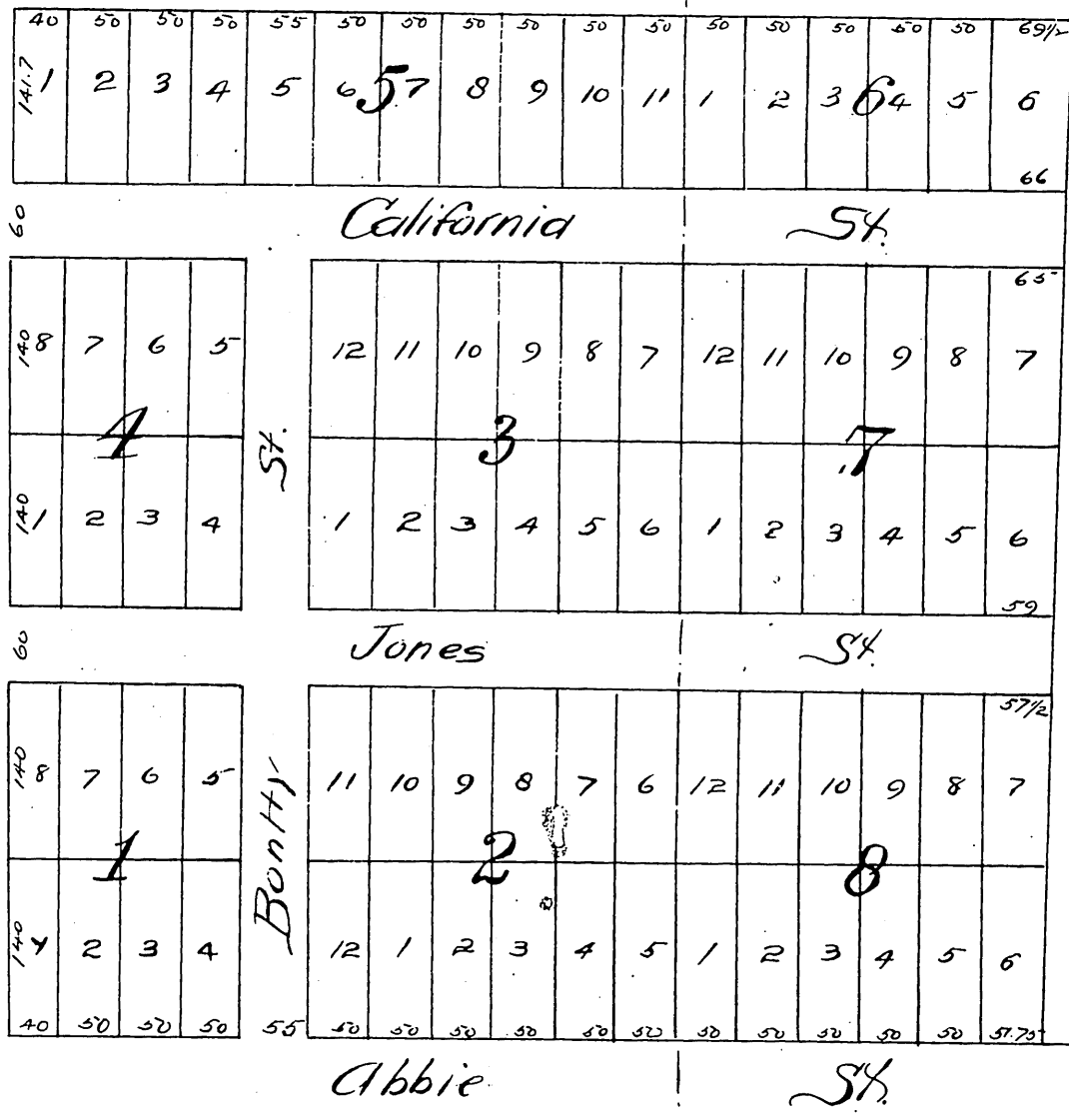
Subdivision of Block 17 & portion of Block 16
of the

LUCAS RANCHO

Santa Monica Calif.

S.R. Langworthy, C.E.

Scale 50ft = 1inch.



Mooney Mansion

A full true and correct copy of the original (reduced to the scale of 300 feet to one inch) recorded October 11th 1887 at 9:27 A.M. at request of Jas Bonity

Frank A. Gibson County Recorder.
by George Bugbee Deputy.