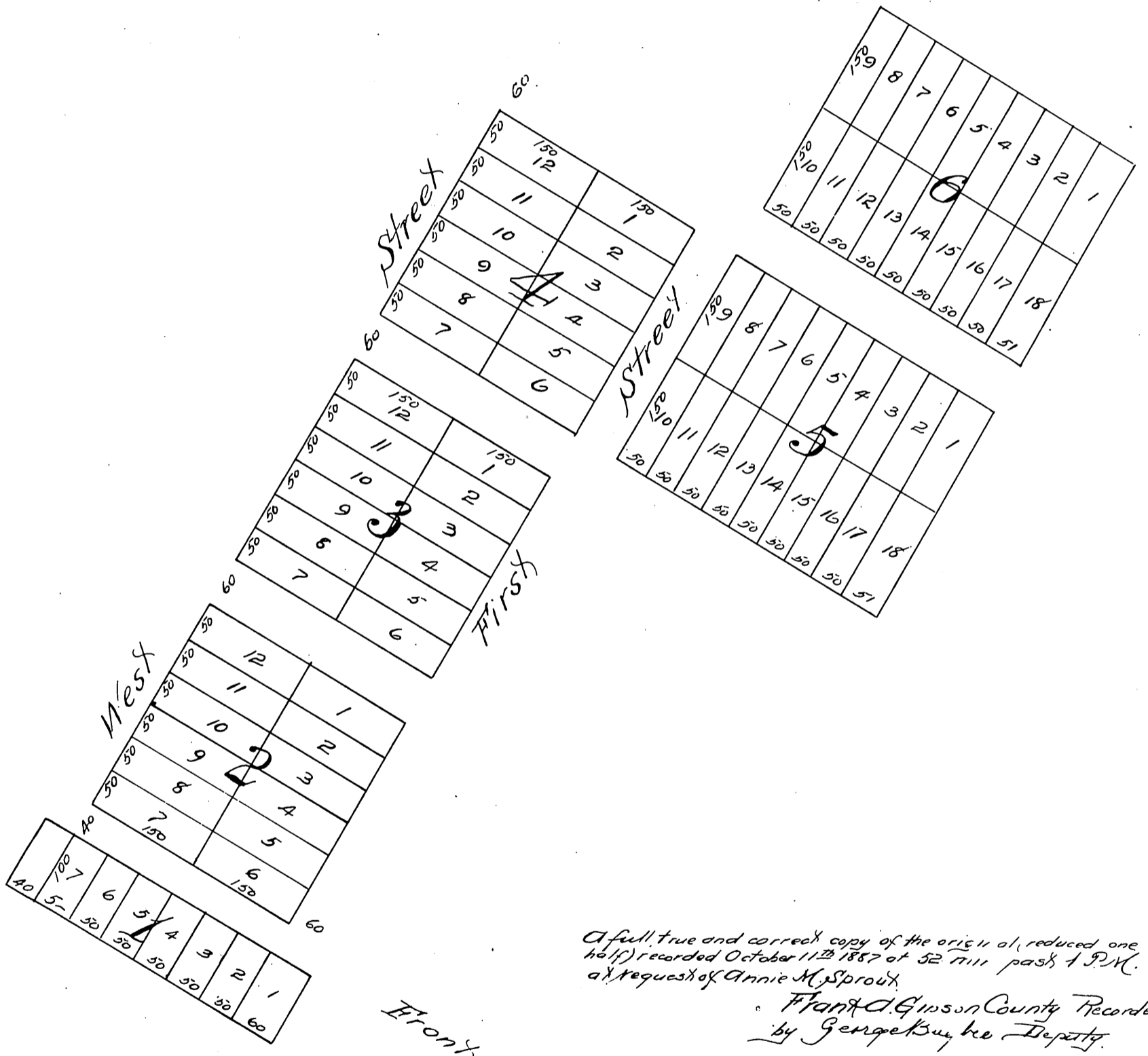




Map  
of  
Carlton Addition  
to the Town of  
**NORWALK**  
Los Angeles Co., Cal.  
Surveyed October 1887.



A full, true and correct copy of the original, reduced one half, recorded October 11<sup>th</sup> 1887 at 52 7/111 past 1 P.M. at request of Annie M. Sprout.  
Frank D. Gimson County Recorder.  
by George Bayne Deputy.

Scale 80 feet to 1 inch.

Street