

MAP

— of the South half of the —

WEST END UNIVERSITY

ADDITION

— TO —

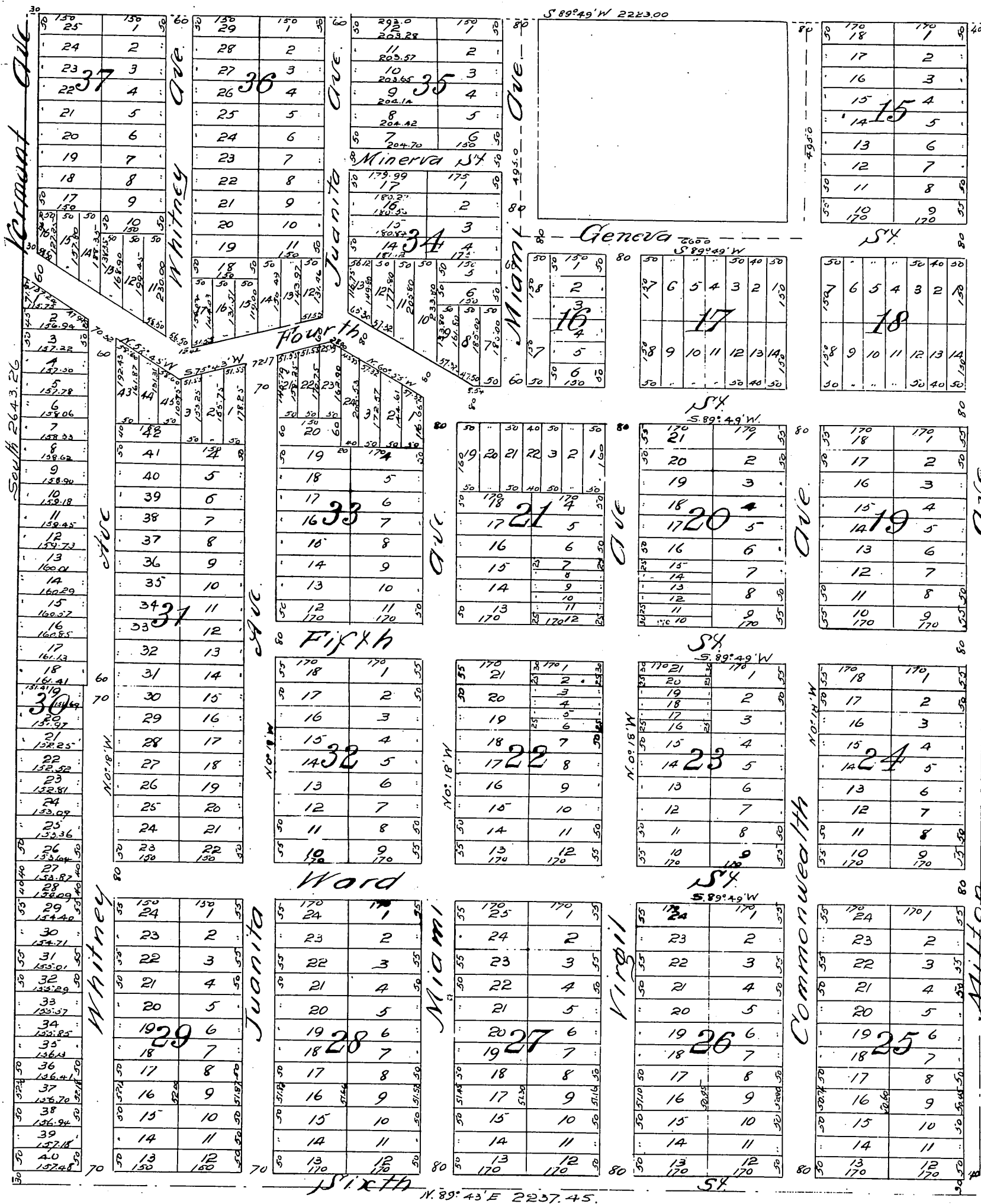
Los Angeles, Cal.

Survey completed Feb. 1887 by Geo. F. Pillsbury.

Scale 150 ft. to Inch.

Note.

The South half of the West End University Addition is a subdivision of the S.W. 1/4, and Lots 3rd & 4 of fractional Sec. 19, T. 15 N. R. 13. W. S. B. M.



A full true and correct copy of the original (reduced to the scale of 250 feet to one inch) recorded October 11th 1887 at 5 min past 3 P.M. at request of Geo. R. Shatto.

Frank A. Gibson, County Recorder.
by W. C. Johnston, Deputy.