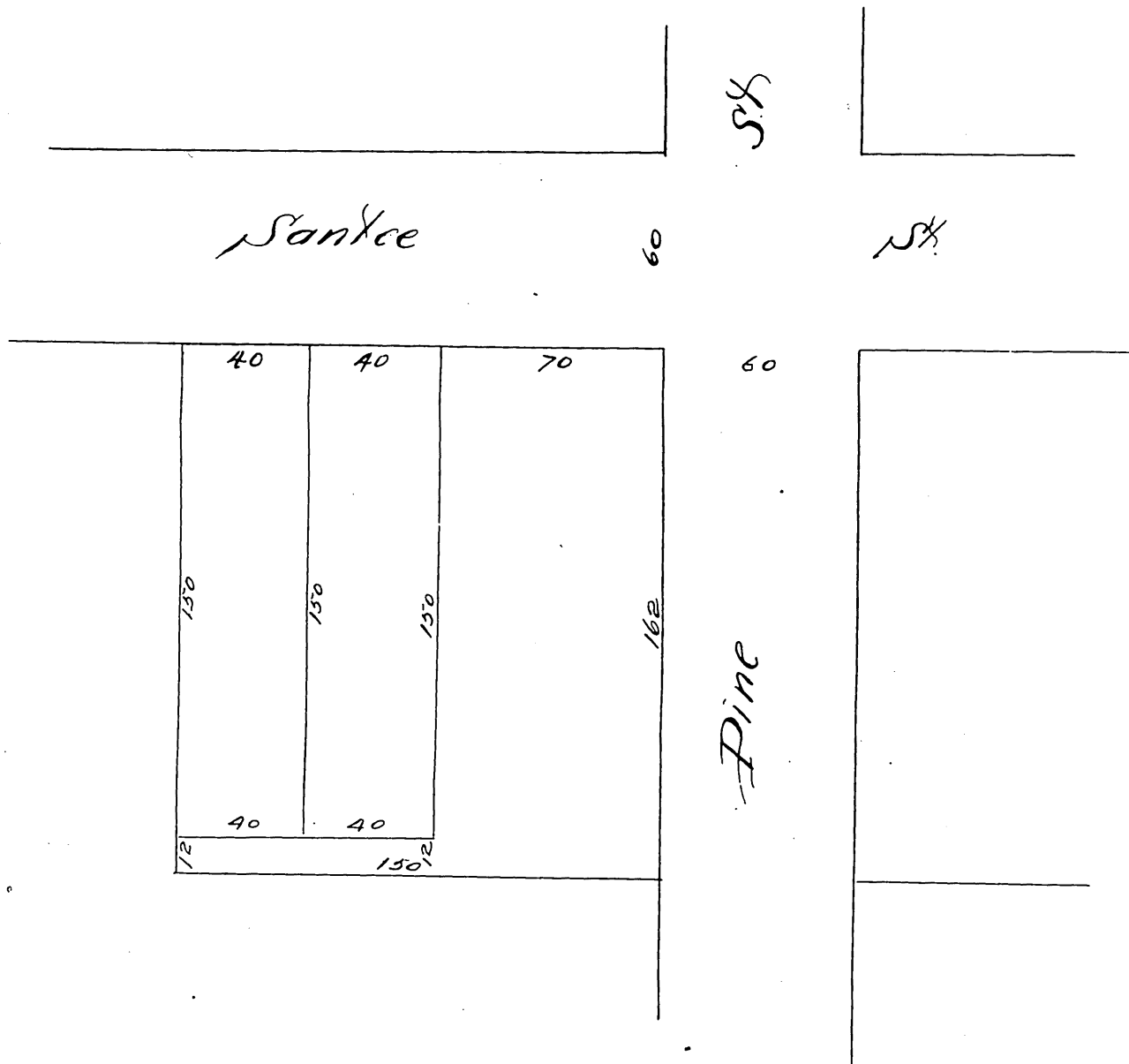


Map of G.A. Howards Subdivision

of Lots 5, 6 and 7 of Subdivision No 1,
De Celis Vineyard Tract.
as per map of said tract recorded in Book 9 page 13
Miss Records of Los Angeles Co.

Scale 30 ft to 1 inch.



A full true and correct copy of the original (reduced to the
scale of 50 feet to one inch) recorded October 12th 1887 at
2 min past 10 A.M. at request of Geo. A. Howard.
Frank A. Gibson County Recorder
by Geo. Bugbee Deputy.