



MAP

OF

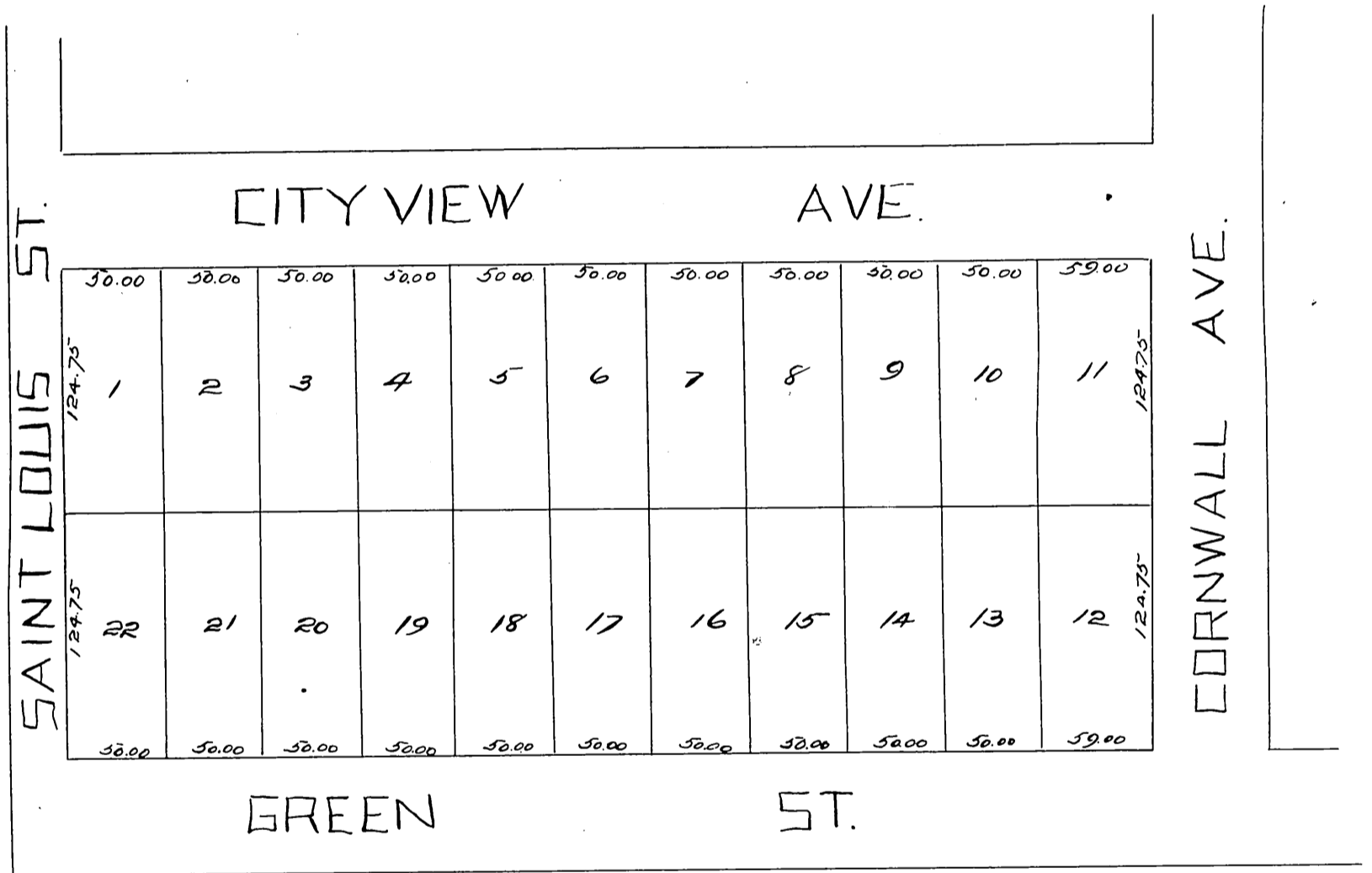
Layton & Veits Subdivision

of Lot 2 of Wilkinson's Subdivision of Lot 1 Block 61 Hancock's Survey

Los Angeles City, Cal.

E. G. Jones C. E.

Scale 50 feet to one inch.



A full true and correct copy of the original (reduced to the scale of 80 feet to one inch.) recorded October 12, 1887 at 16 97 min past 11 A.M. at request of Allison Barlow.

Frank A. Gibson Co. Recorder.
by George Bugbee. Deputy.