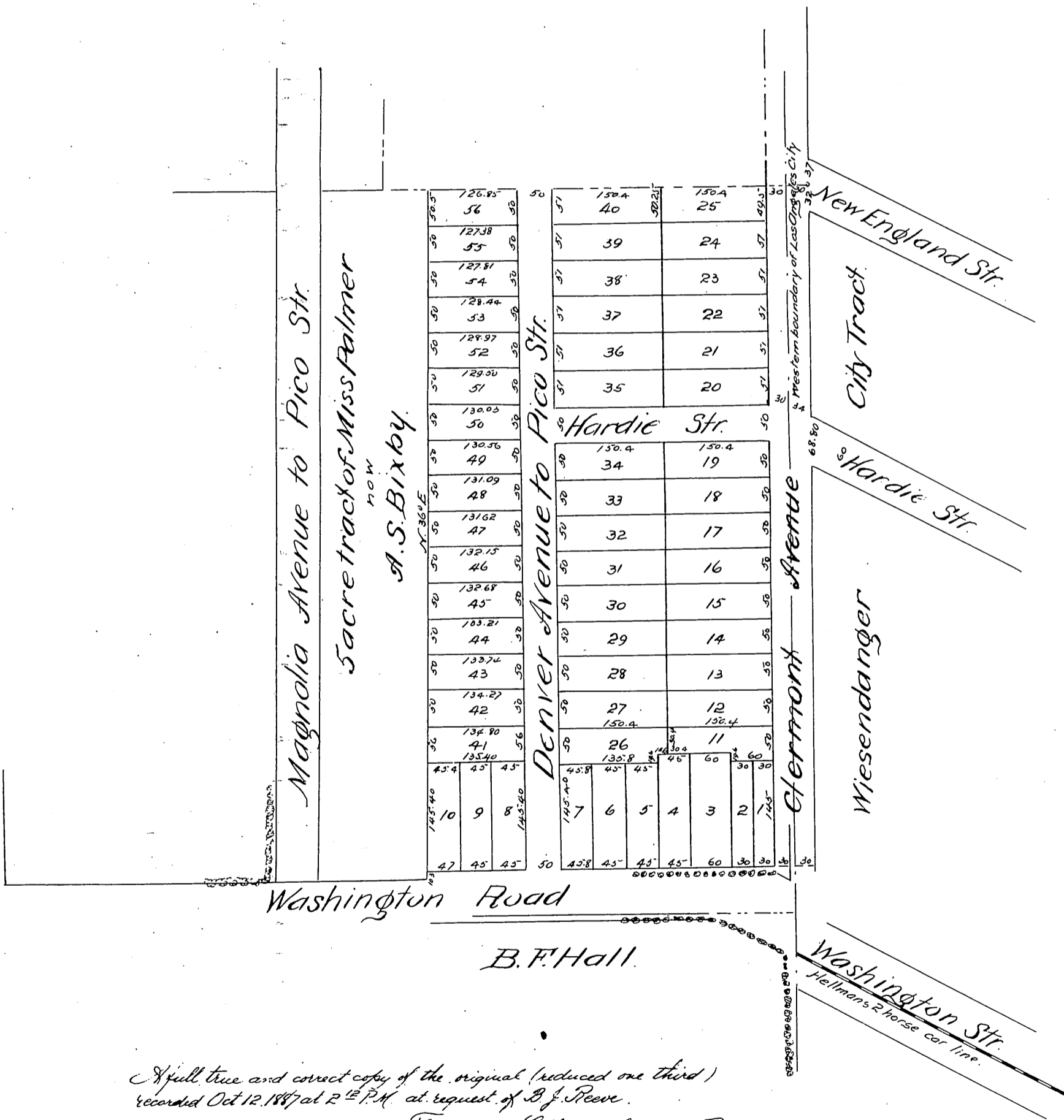


Corrected Map of the Subdivision of the REEVE TRACT,

plotted at the request and under the direction of B. J. Reeve.
The exterior lines of this tract are in accordance with a survey
made by Hansen & Solano Nov. 6. 1886.
The subdivision lines are made by direction of
B. J. Reeve

Scale of 1 in 40 80 feet



A full true and correct copy of the original (reduced one third)
recorded Oct 12. 1887 at 2¹² P.M. at request of B. J. Reeve.
Frank A. Gibson County Recorder
by George Kugbee Deputy.