

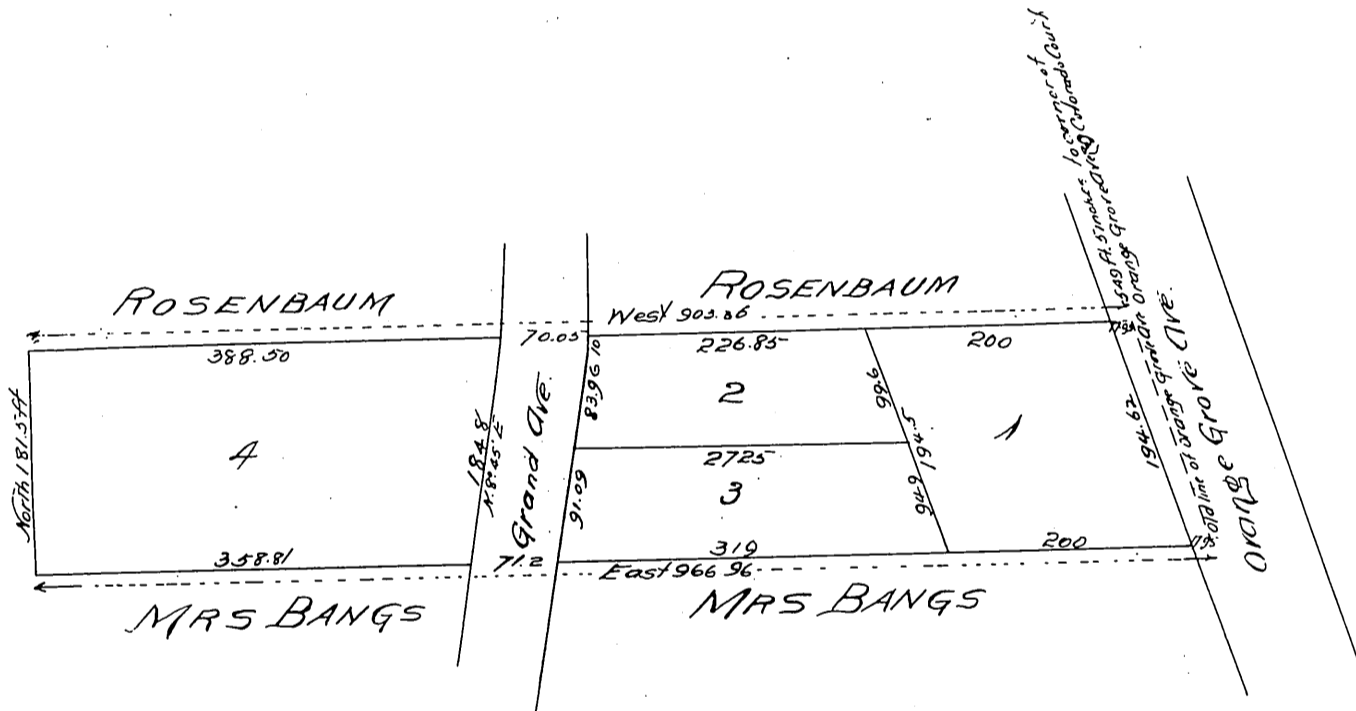
Map of the Subdivision of a part of

Lot 2 of Berry & Elliotts Subdivision in Div. D.

of the lands of the San Gabriel Orange Grove Association, as per map in Book 2 pages 556 to 559 inclusive of the Miscellaneous Records of Los Angeles County. Beginning at a stake in the West side of Orange Grove Ave, set by J. M. Willard, C. W. Eng. according to deed of M. Rosenbaum to C. R. Foote recorded in Book 221 page 12 of Deeds, running thence West with Rosenbaum's South line 903.36 feet, thence South 181.5 feet to the N.W. corner of the Childs Tract, thence East with the line of the Childs Tract 966.96 feet to the West line of Orange Grove Ave, thence N. 18° 30' W with Orange Grove Ave 193.17 ft. to the beginning

Surveyed Sept 1887 by Chas. D. McCandless, C. W. Eng.

Scale 150 ft = one inch.



A full true and correct copy of the original recorded Oct 13th 1887 at 8:51 A.M. at request of C. R. Foote

Frank A. Gibson County Recorder
by Geo Bugbee Deputy.