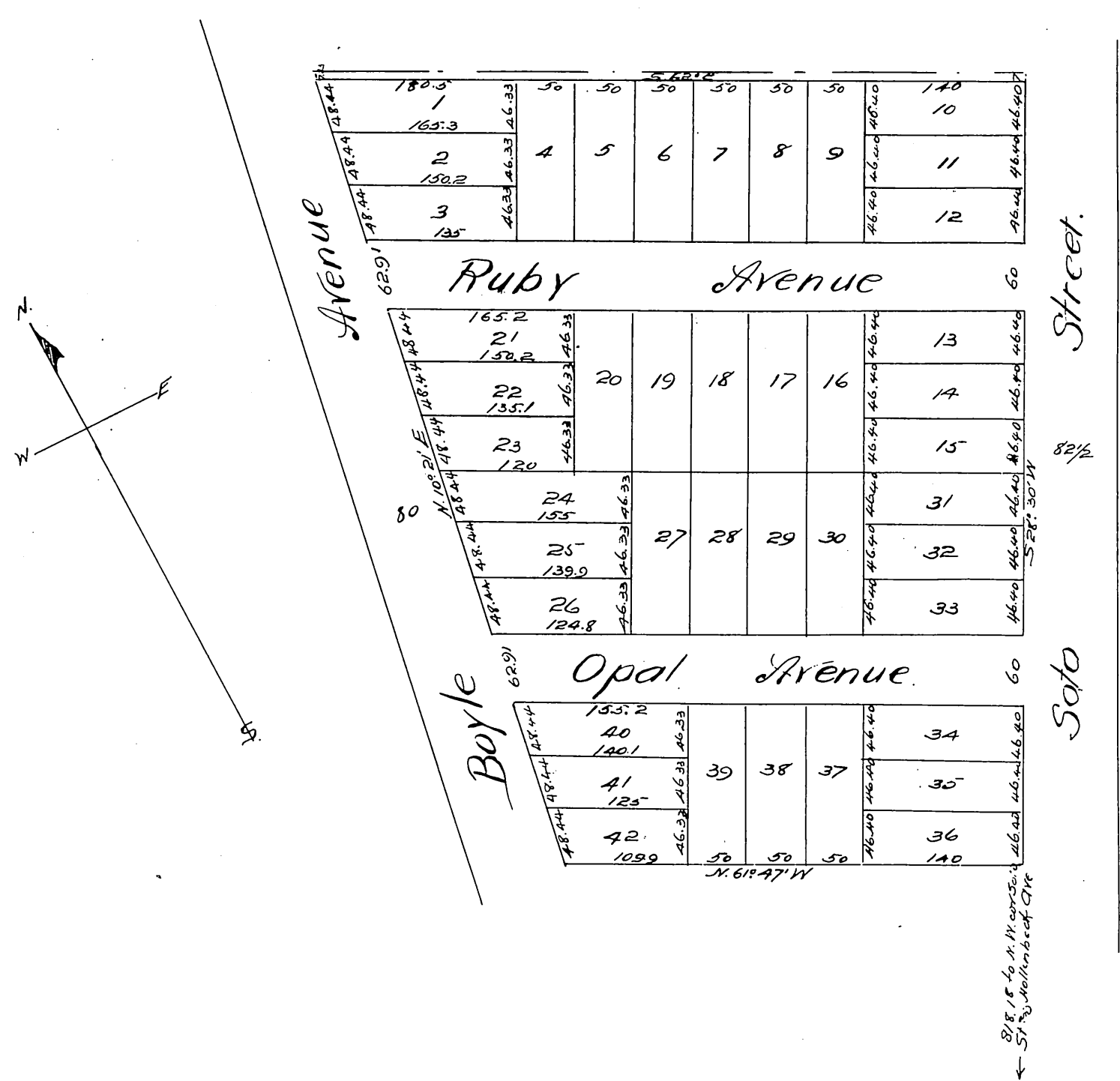


MAP of THE BANNER TRACT

A portion of Lot 6, Block 58, H.S.
Los Angeles City Cal.

Subdivided Sept. 1887 by W.J. TINKER.

Scale 40 ft. = 1 in.



(A full true and correct copy of the original (reduced to the scale of 120 feet to one inch) recorded October 13th 1887 at 21 min past 11 A.M. at request of T. Whittelsey.

Frank A. Gibson Co. Recorder.
by George Baylee Deputy