

Plan

OF THE

ORANGE GROVE TRACT,

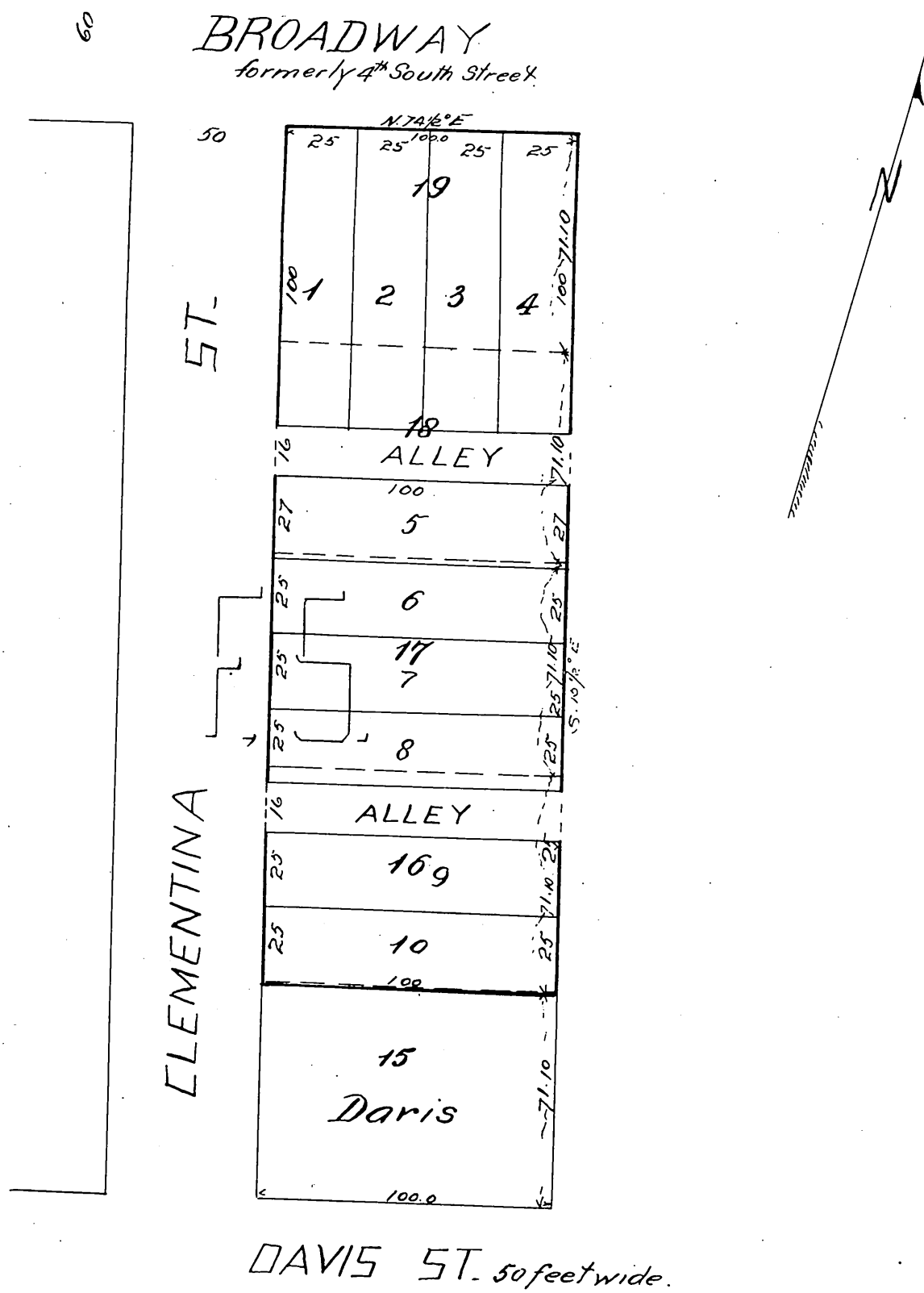
ANAHEIM

Los Angeles County, California.

Scale 20ft per inch.

Note. This plan is a Subdivision of Lots 16, 17, 18 and 19 of the Estate of Mary Strobel as per map recorded in Book 3 of Miscellaneous Records pages 76 & 77 Los Angeles County Records. The original Lots 16, 17, 18 & 19 are designated upon this plan by the red lines.

R. Helmore, Draughtsman.



A full true and correct copy of the original (reduced to the scale of 50 feet to one inch) recorded Oct. 14 1887 at 10¹³ A.M. at request of M^s Duffee Bros.

Frank A. Gibson, Co. Recorder.
By George Bugbee, Deputy.