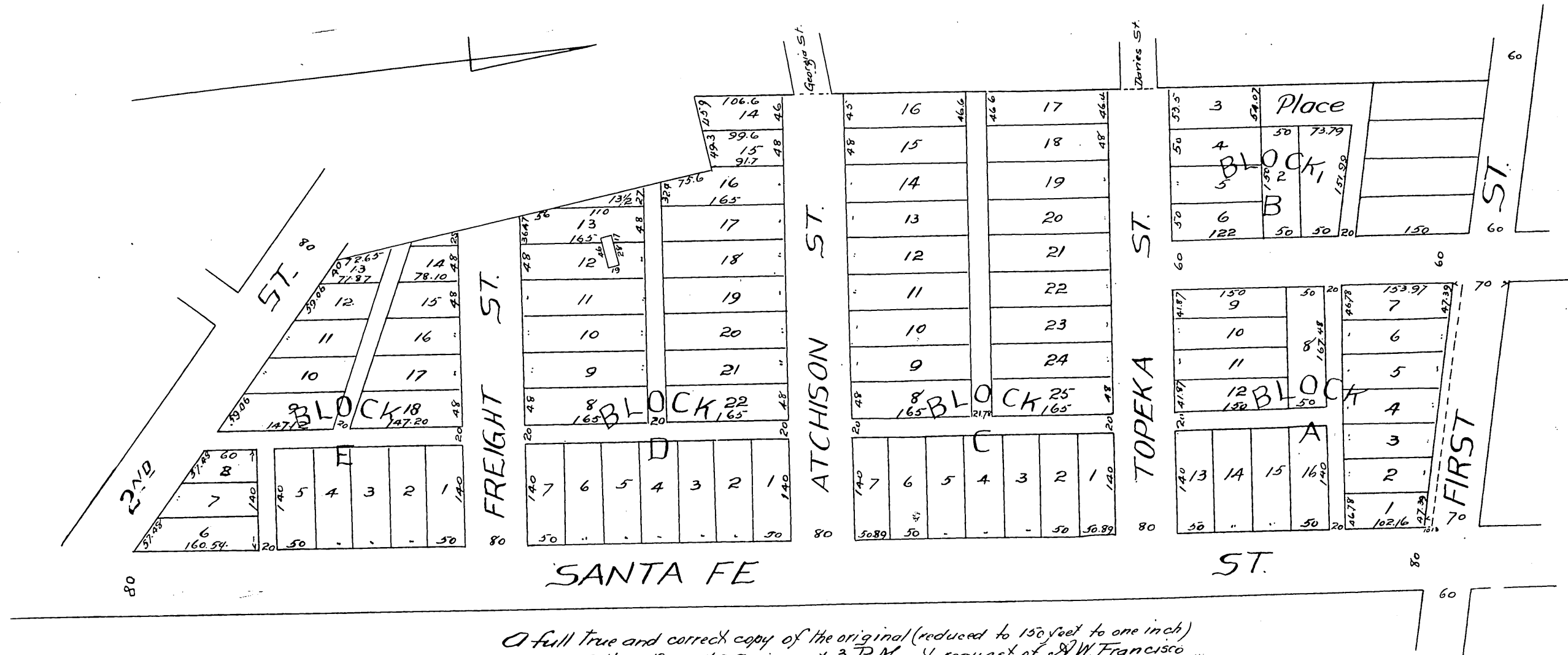


Subdivision of the BIGELOW TRACT

adjoining the California Central Depot Grounds,
Los Angeles, Calif.
Scale 100-1 inch.



A full true and correct copy of the original (reduced to 150 feet to one inch)
recorded Oct 14 1887 at 35 min past 3 P.M. at request of A.W. Francisco
Frank U. Gibson County Recorder
by George Bugbee Deputy.

