

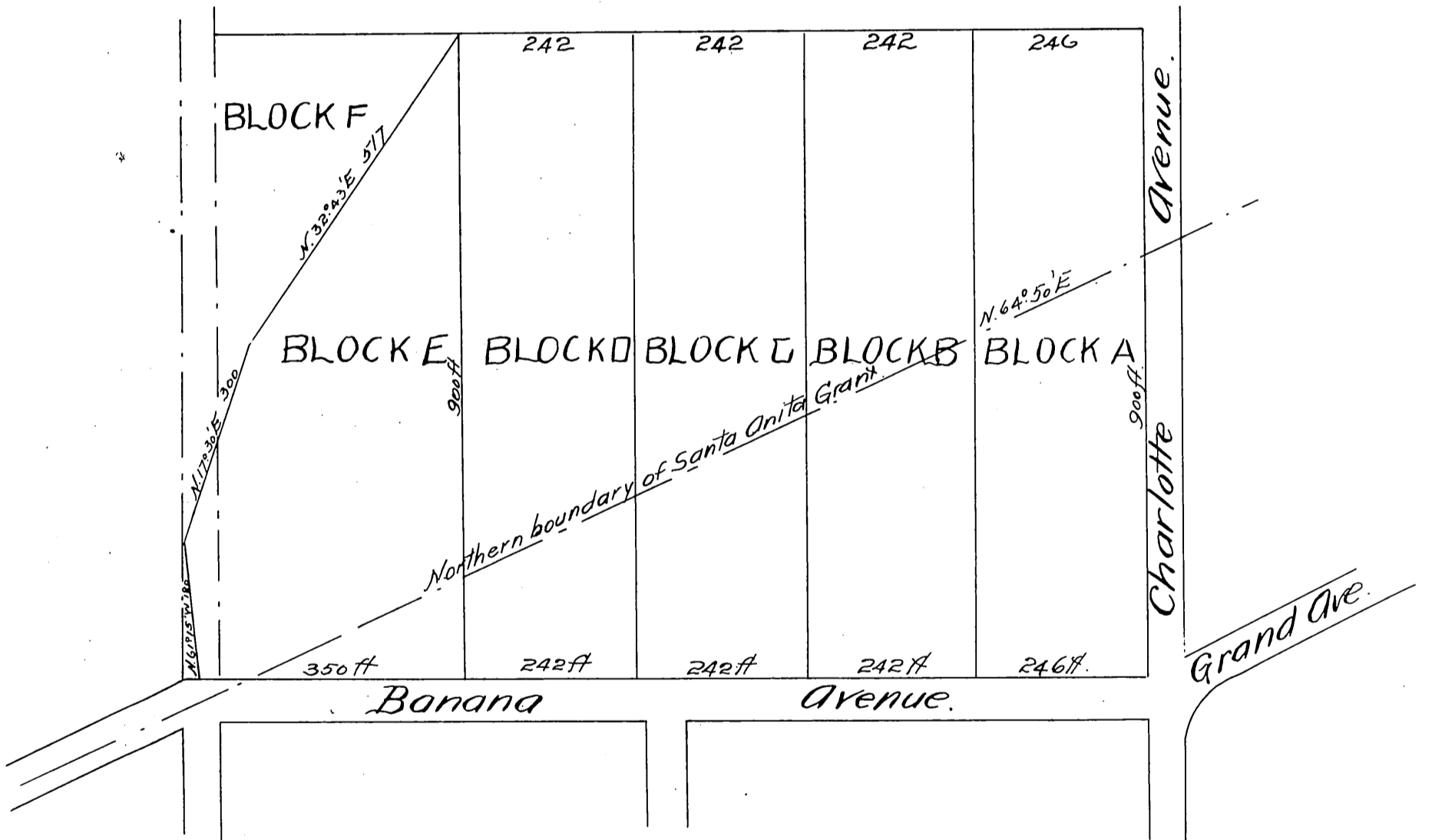
Map
of
Banana Addition
TO
Monrovia Tract.

Part being in Santa Anita Grant & part in Lot A, Sec. 23
Tp 1, N. R. 11. W. S. B. M. as shown by this map.

Los Angeles Co., Cal.

Surveyed by Flanagan & Quinton
Drawn by Charters & McDonald, Monrovia.

Scale 100 ft to 1 in.



A full true and correct copy of the original (reduced to scale of 200 feet to one inch) recorded October 15th 1887 at 4 P. M. past 10 A. M. at request of W. N. Monroe.

Frank A. Gibson Co. Recorder.
by George Bugbee, Deputy.