



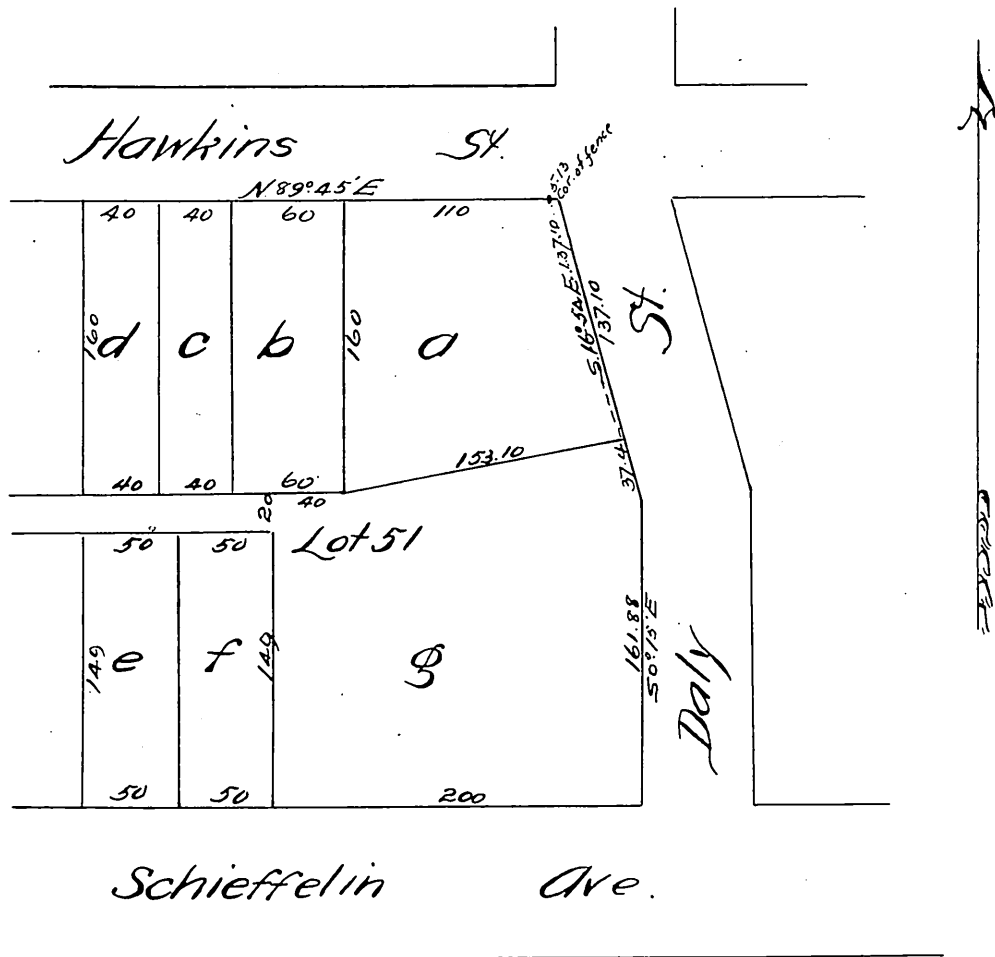
MAP of part of Schieffelin Tract

East Los Angeles Cal.

Sept. 13 1887 by L.H. Carver. Subd. of Lot 51.

By direction of F.H. Lowell

Scale of 100' = 1"



A full, true and correct copy of the original recorded Oct 17, 1887
at 11:40 A.M. at request of F.H. Lowell

Frank A. Gibson Co. Recorder.
by George Bughe Deputy.