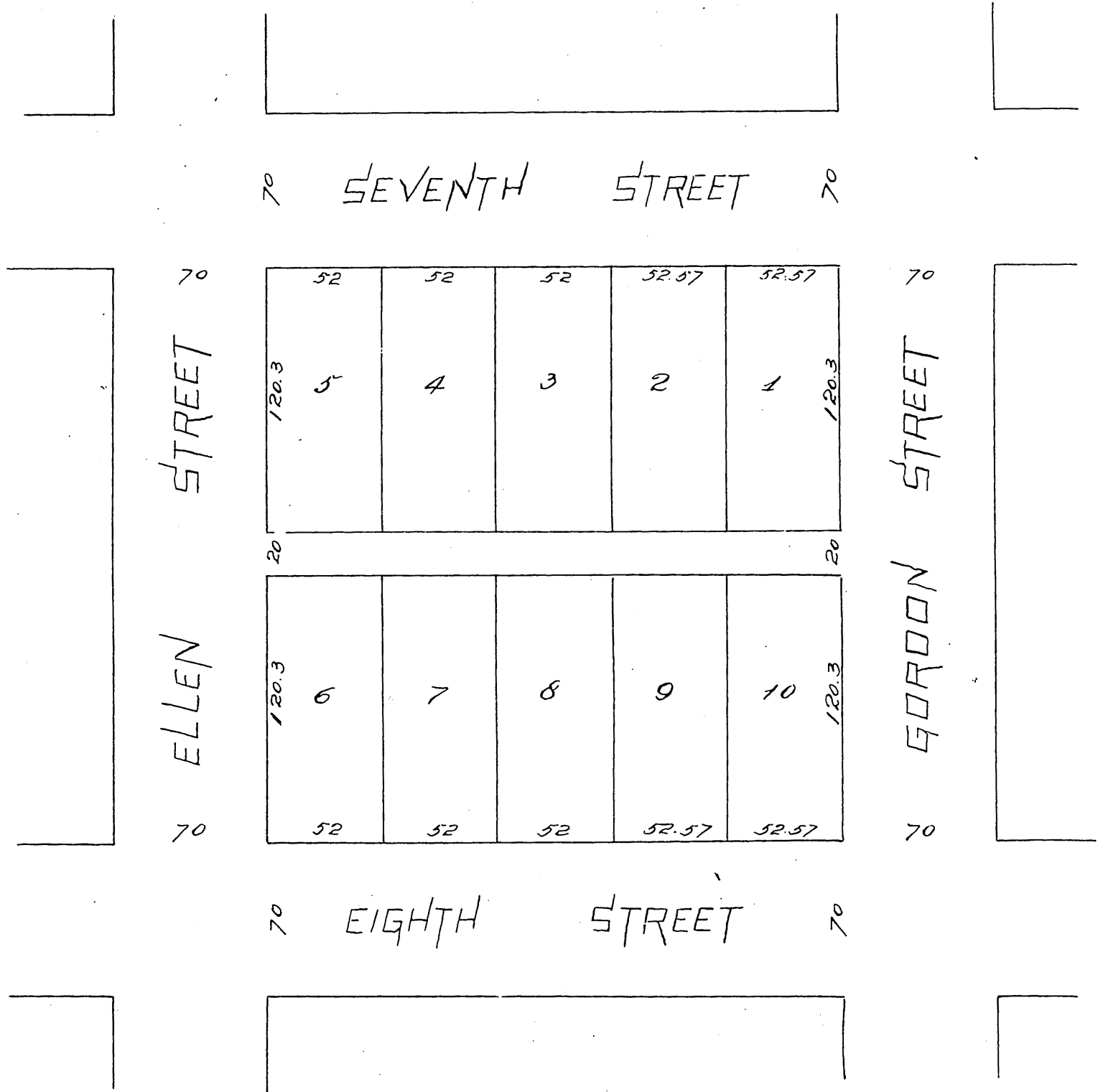


MAP
OF
A.H. Summers' Re-subdivision
of Block 106,
POMONA CAL.

Surveyed in Oct. 1887 by H.E. Stoddard C.E.

Scale 30 ft to 1 inch.



A full true and correct copy of the original (reduced to 60 feet to 1 inch) recorded October 19, 1887 at 4³⁵ P.M. at request of A.H. Summers.

Frank A. Gibson, County Recorder,
by George T. Sugbee Deputy.