

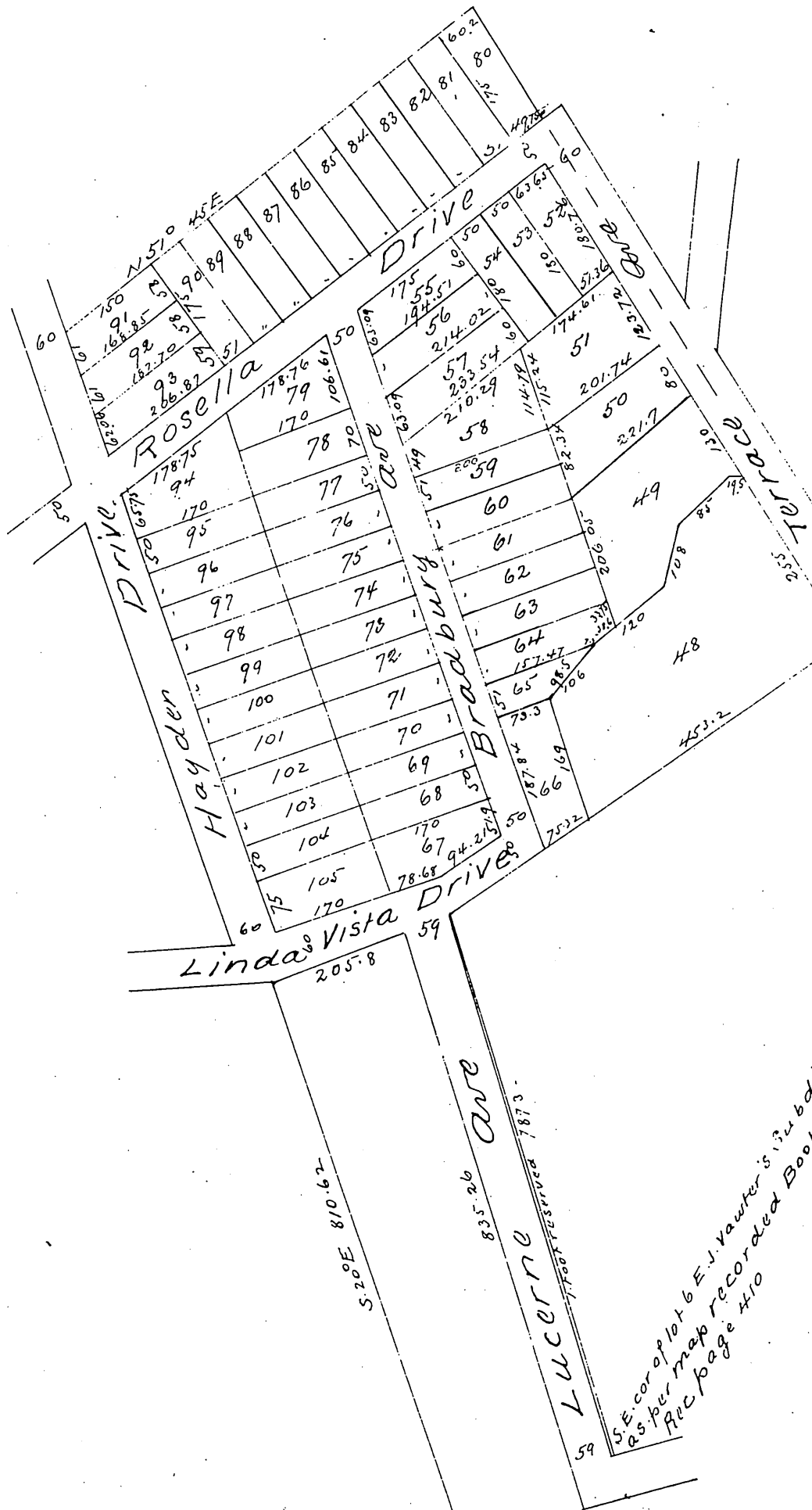
Map of Park Place Addition

Being a Subdivision of lots 4, 5 + 6 of Subdivision of E.J. Vawters
45 acres recorded in Book 3 page 410 Misc. Records also the
Western portion of the North 363 ft of lands marked Mrs
Vawter Division D and the Western portion of
Reservation lands marked Reservoir Park of the
lands of the San Gabriel Orange Grove
Association
Pasadena Los Angeles Co Cal.

Surveyed by Place & Pieper

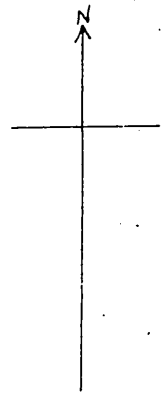
Scale 100 ft = 1 inch

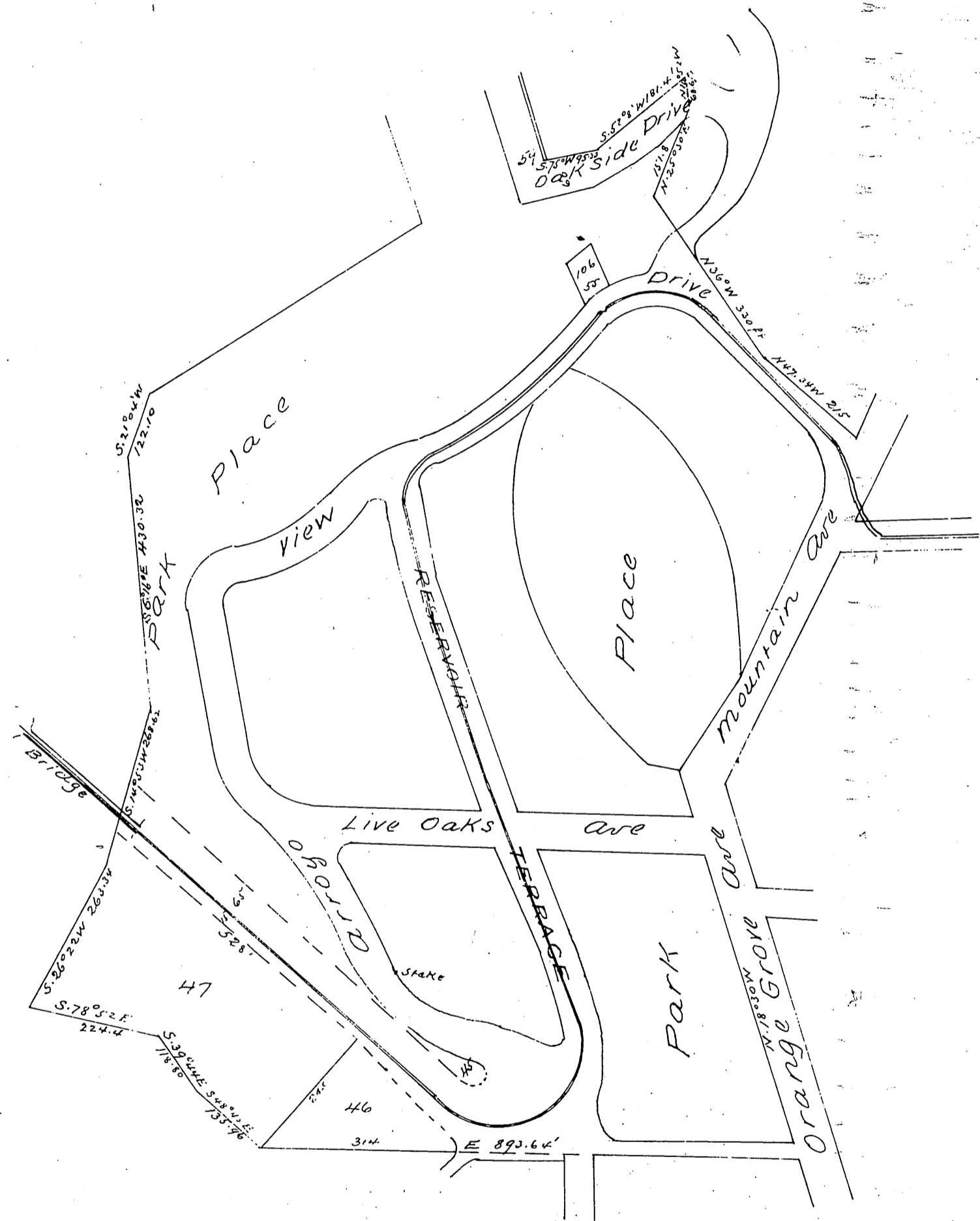
Combell & Maush
(Draft)



SE corner lot 4 Vawters Sub
as per map recorded
Book 3 page 410 Misc.
Records Los Angeles Co
Cal.

SE corner lot 6 E.J. Vawter's Subdivision
as per map recorded Book 3 Misc.
Records page 410





A full true and correct copy of the original (reduced to the scale of 200 feet to one inch) recorded October 19th 1887 at 55 min past 2 P.M. at request of Thos F. Flynn
 Frank A. Gibson County Recorder
 by George Bugbee Deputy