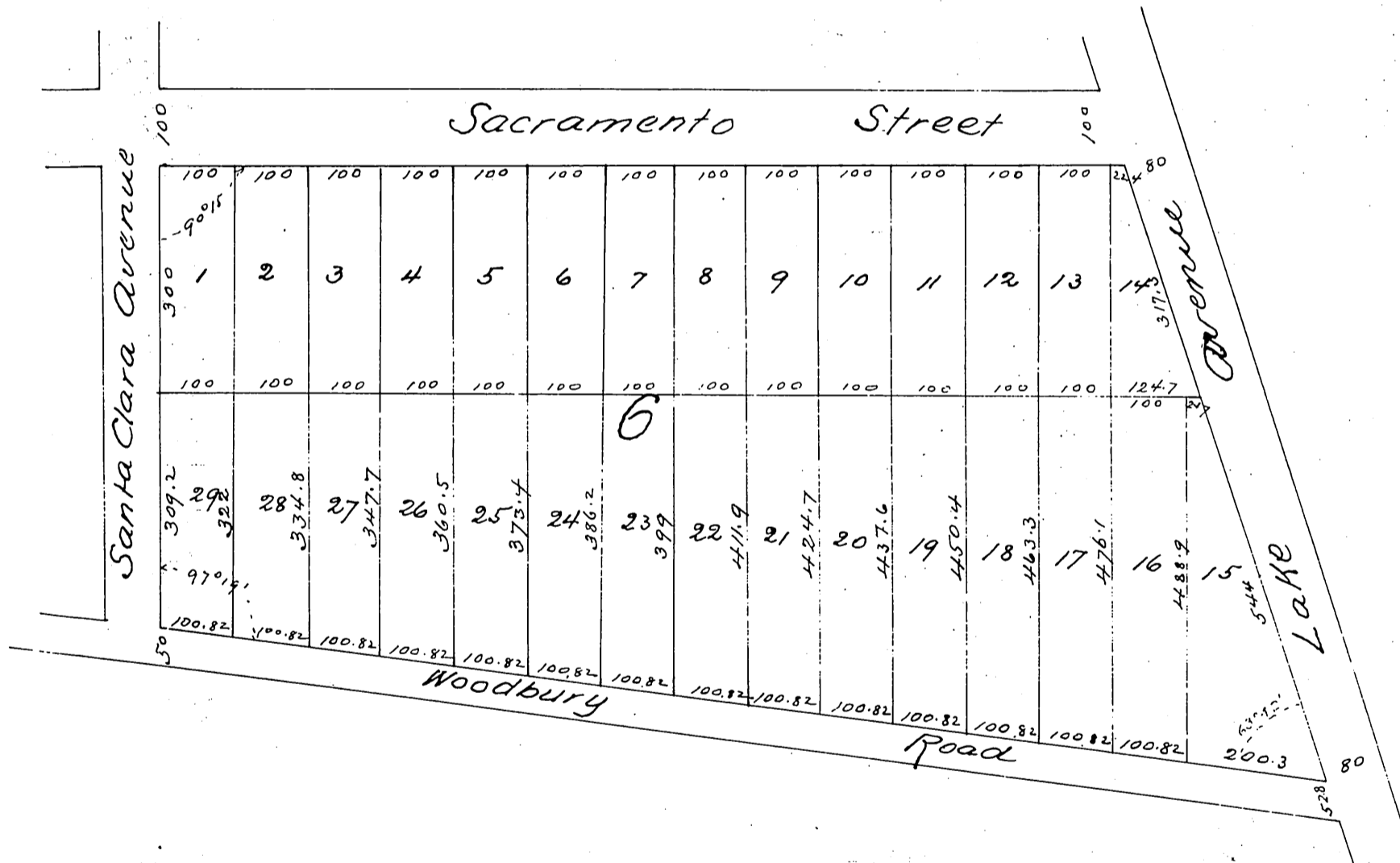




Map of the Resubdivision of Block 6 Altadena

As shown on Map 1 of Altadena recorded in Book 16 page 45 + 46
of Misc. Records Los Angeles Co Cal
Surveyed at request of J. P. + F. J. Woodbury by J. M. Willard. C. E.
1886

Scale 200ft = 1inch



A full, true and correct copy of the original recorded October 20, 1887
at 11 A.M. at request of E.C. Webster & Co

Frank A. Gibson Co Recorder
by George Bugbee Deputy