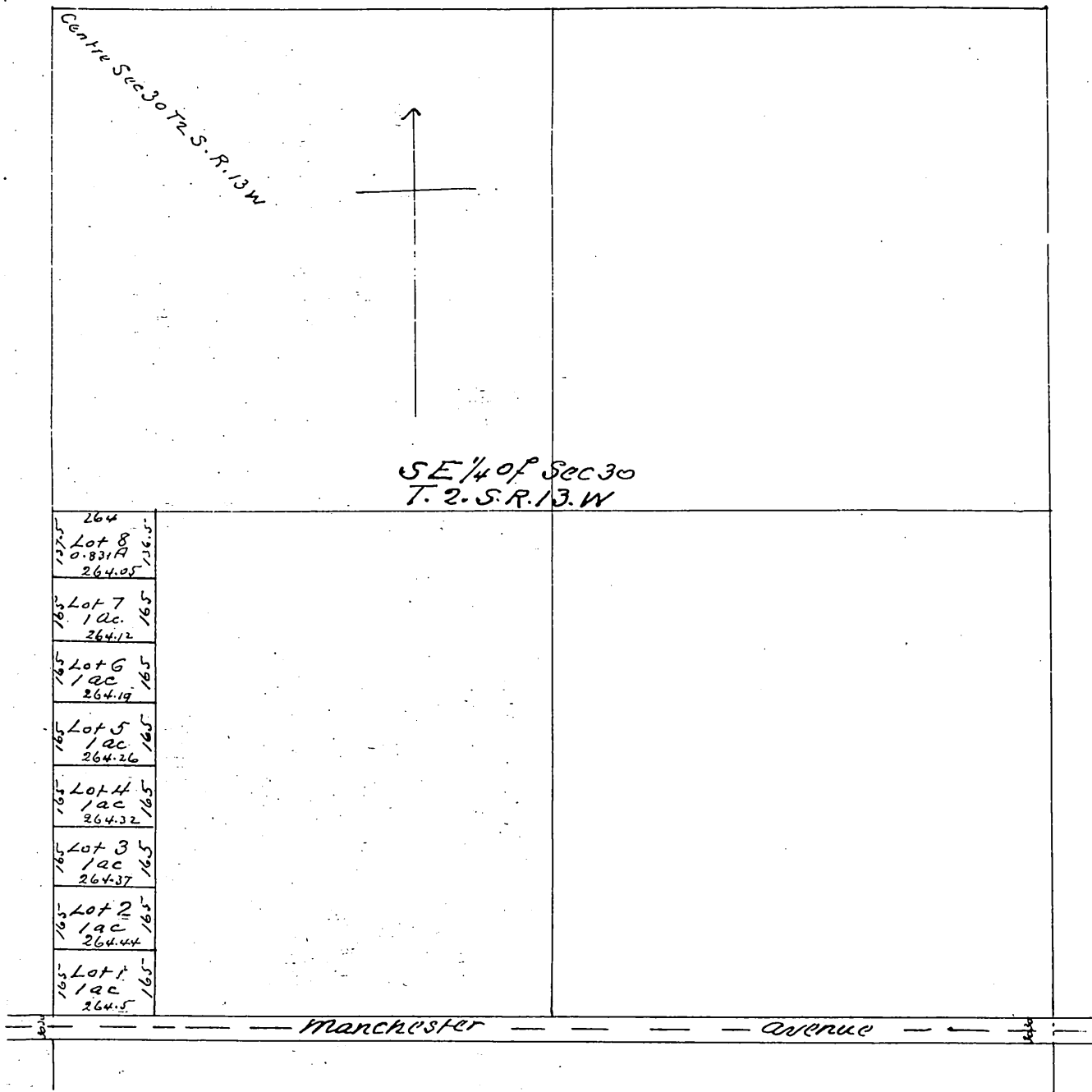


Map
 OF
 Brock's Subdivision
 of the
 Lawrence Fogal Tract
 Los Angeles Co Cal.
 Surveyed Oct 1887 by Kinnear & Warren
 Scale 200ft = 1 in



A full, true and correct copy of the original (reduced to the scale of 400 feet to one inch) recorded October 21st 1887 at 8 3/4 mat request of G. C. Brock
 Frank A. Gibson Co Recorder
 by George Bugbee Deputy