

Note  
 The dotted lines around northern part of sub  
 division indicate the original boundary lines  
 of the Lock Tract —  
 Fences  
 Willow hedges

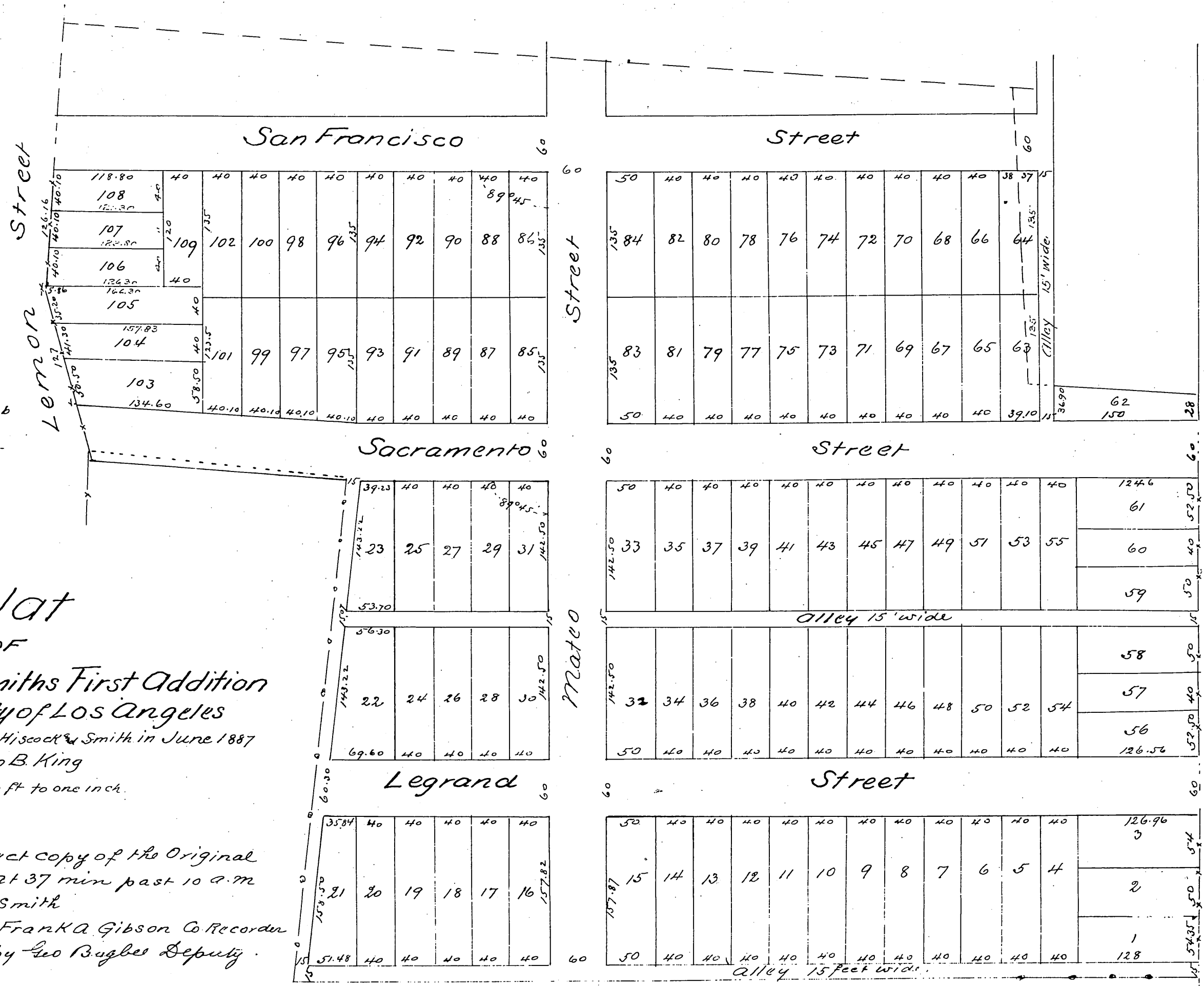
# Plat OF Hiscock and Smiths First Addition in the City of Los Angeles

Subdivided at the request of Hiscock & Smith in June 1887  
 by Geo B. King

Scale 100 ft to one inch.

A full true and correct copy of the Original  
 recorded October 21<sup>st</sup> 1887 at 37 min past 10 a.m.  
 at request of Hiscock and Smith

Frank A. Gibson Co Recorder  
 by Leo Bugbee Deputy



Santa Fe Avenue