

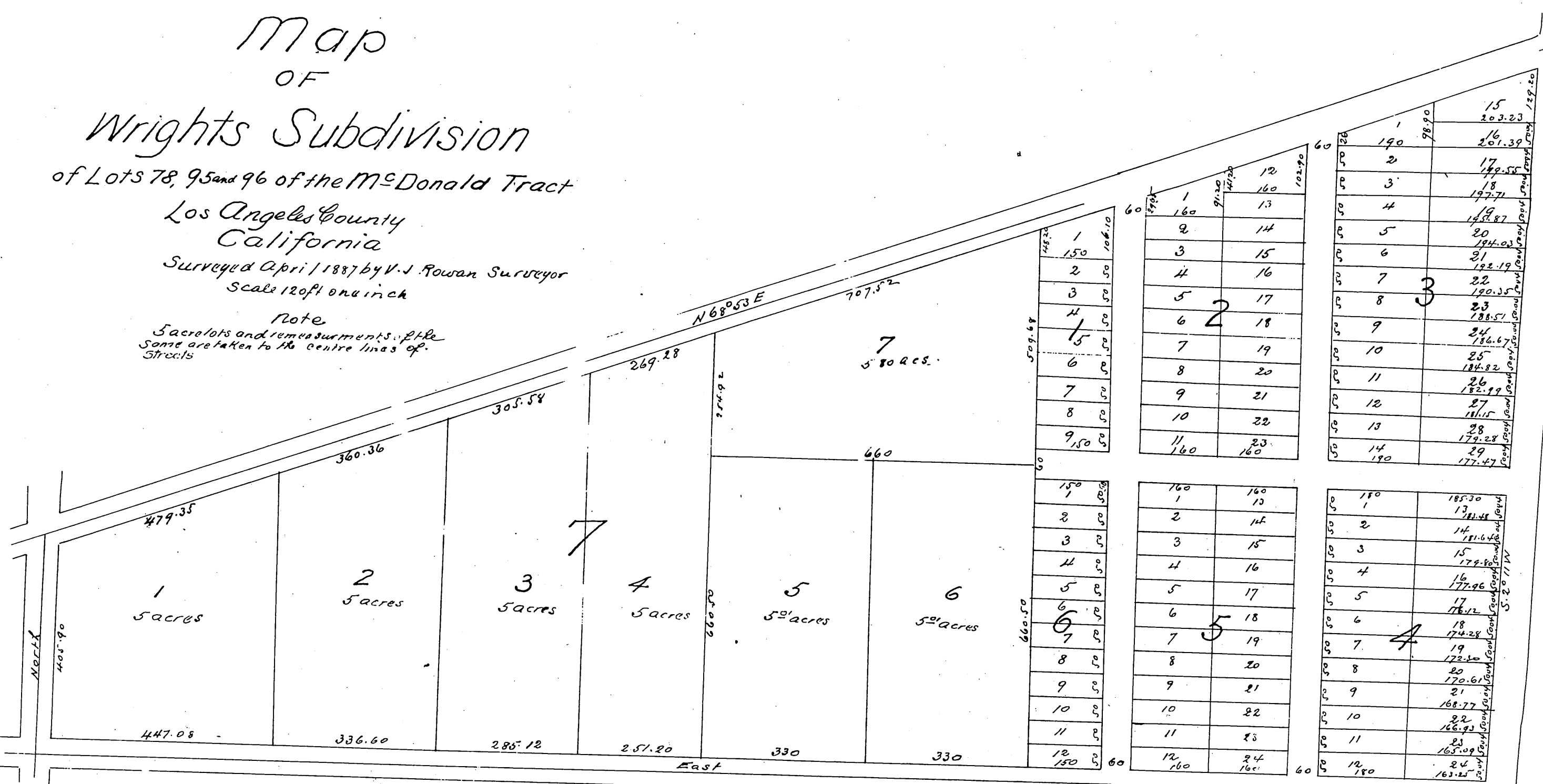
Map OF Wrights Subdivision

of Lots 78, 95 and 96 of the McDonald Tract

Los Angeles County
California

Surveyed April 1887 by V. J. Rowan Surveyor
Scale 120ft on an inch

Note
5 acrolots and remeasurements of the
Some are taken to the centre lines of
Streets



A full true and correct copy of the original (reduced to scale of 200ft to one inch)
recorded October 25th 1887 at 2:42 P.M. at request of B.C. Wright

Frank A. Gibson Co. Recorder
by George Bugbee Deputy

