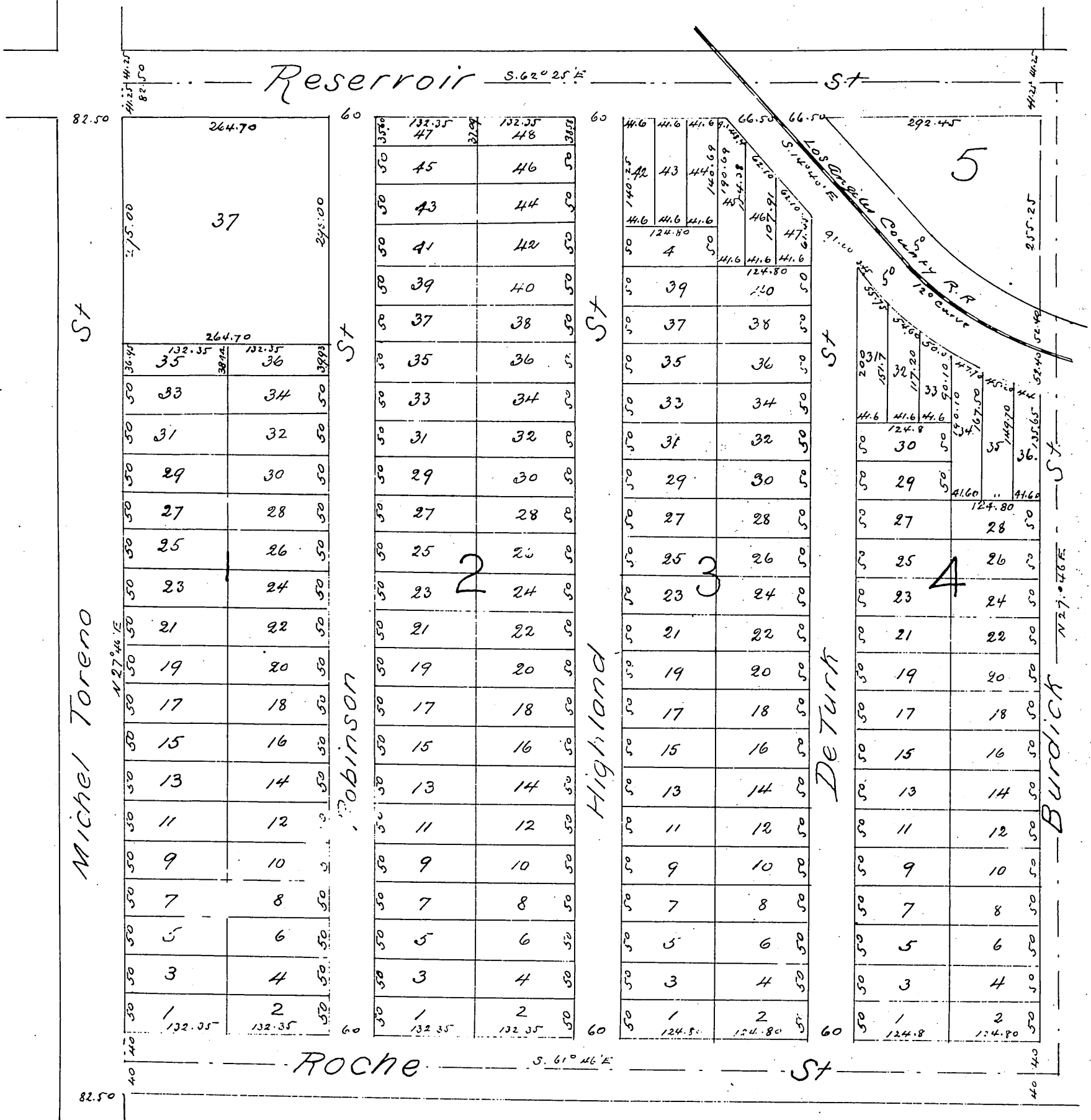




Map
OF
Augusta Heights
Being J. G. De Turk's Subdivision
of Lot 4 Block 28 Hancock's Survey
Los Angeles City Cal
Surveyed Sept 1887 by I. Friel
Scale: 100ft to one inch



A full true and correct copy of the original (reduced to the scale of 150 feet to one inch) recorded October 25th 1887 at 3:30 p.m. at request of J. G. De Turk

Frank A. Gibson County Recorder
by George Bugbee Deputy