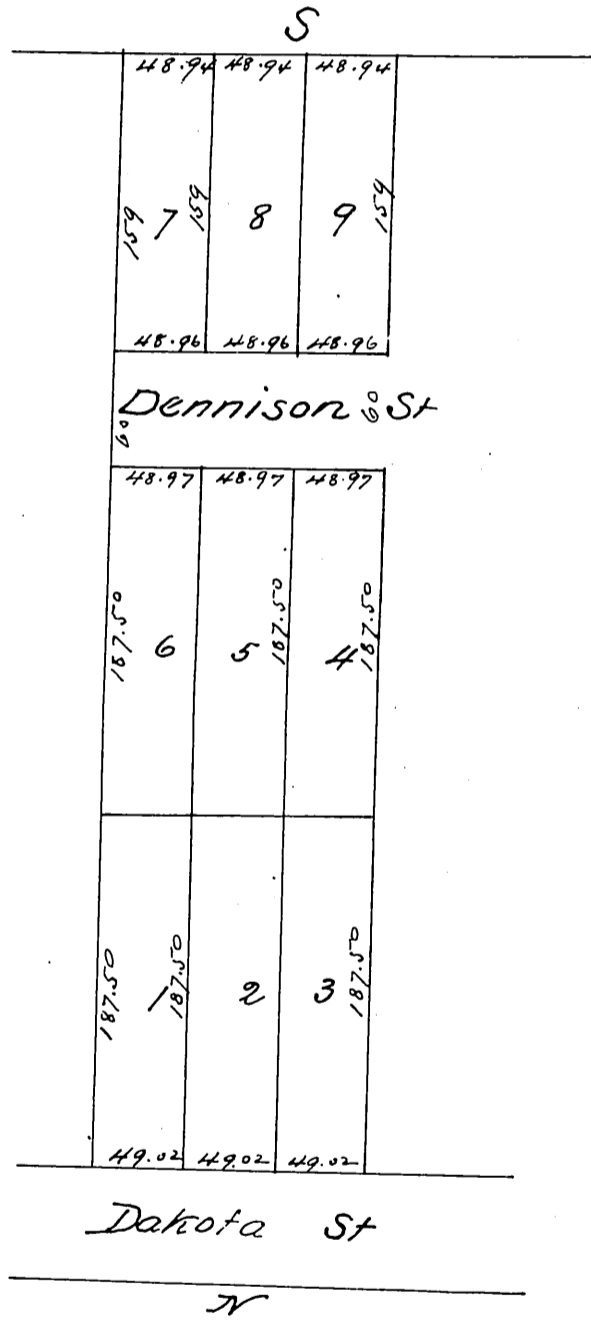


Map of Stone & Dames Subdivision

Being the West 2 acres of the East 4 acres of the West 19.98 acres
of Lot 23 B1/4 "A" San Pasqual Tract
Pasadena Cal
Surveyed Oct 19th 1887 by Geo Helm Sur
Scale 60 feet to the inch



A full true and correct copy of the original (reduced
to the scale of 100 feet to 1 inch) recorded Oct. 25th &
1887 at 4:30 P.M. at request of C.W. Stone

Frank H. A. Gibson Co Recorder
By George Bugbee Deputy