



# Amos Wright's Subdivision

OF

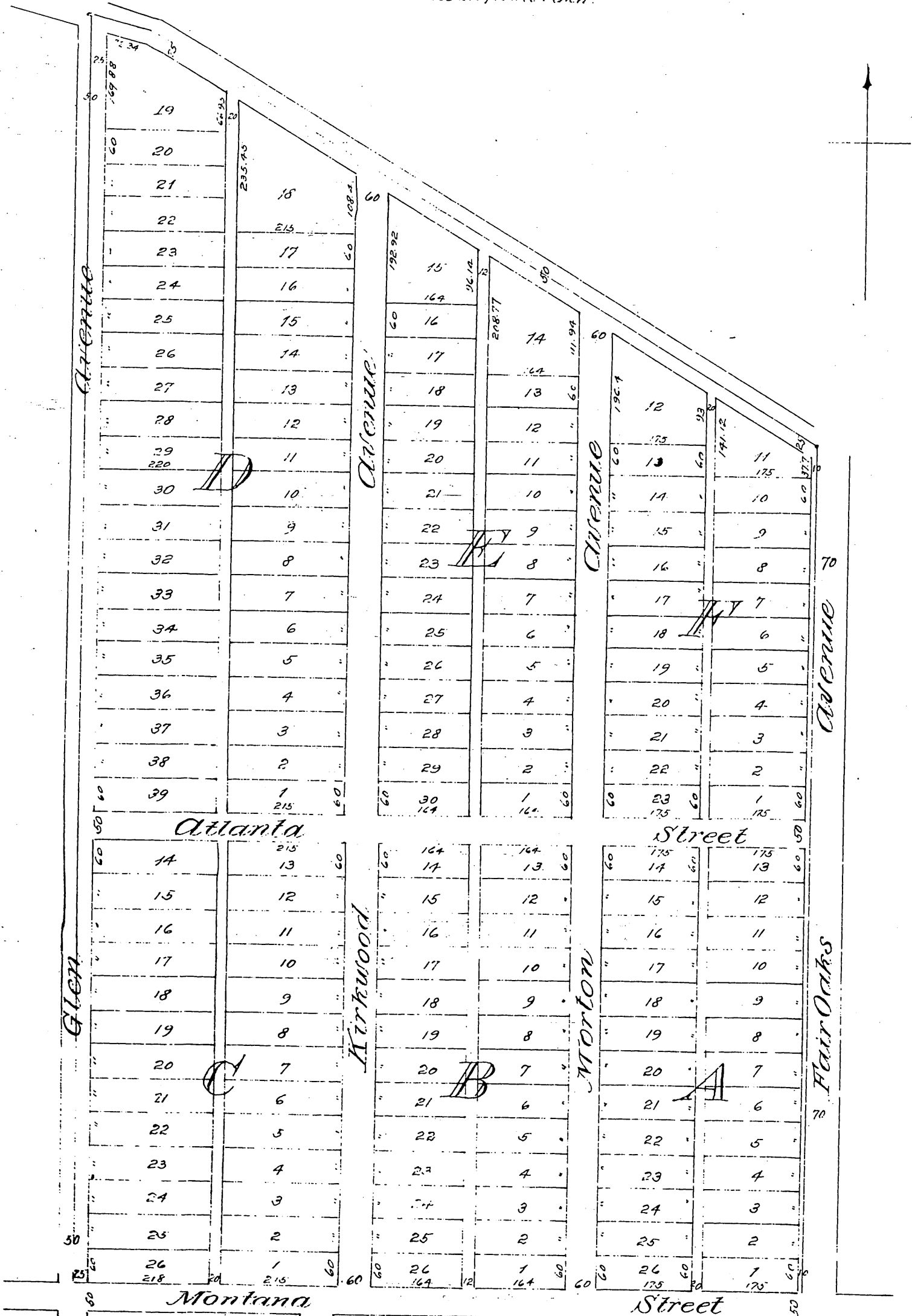
Block H, Painter & Ball Tract,

PASADENA,

Los Angeles Co. Cal.

Surveyed by Jessup & Reece, Oct. 1887.

Scale 100 feet to inch.



A full, true and correct copy of the original (reduced to 100 ft to one inch) recorded October 26<sup>th</sup> 1887 at 3:25 (P.M.) at request of Amos Wright  
 Frank H. Gibson County Recorder  
 by George R. ...