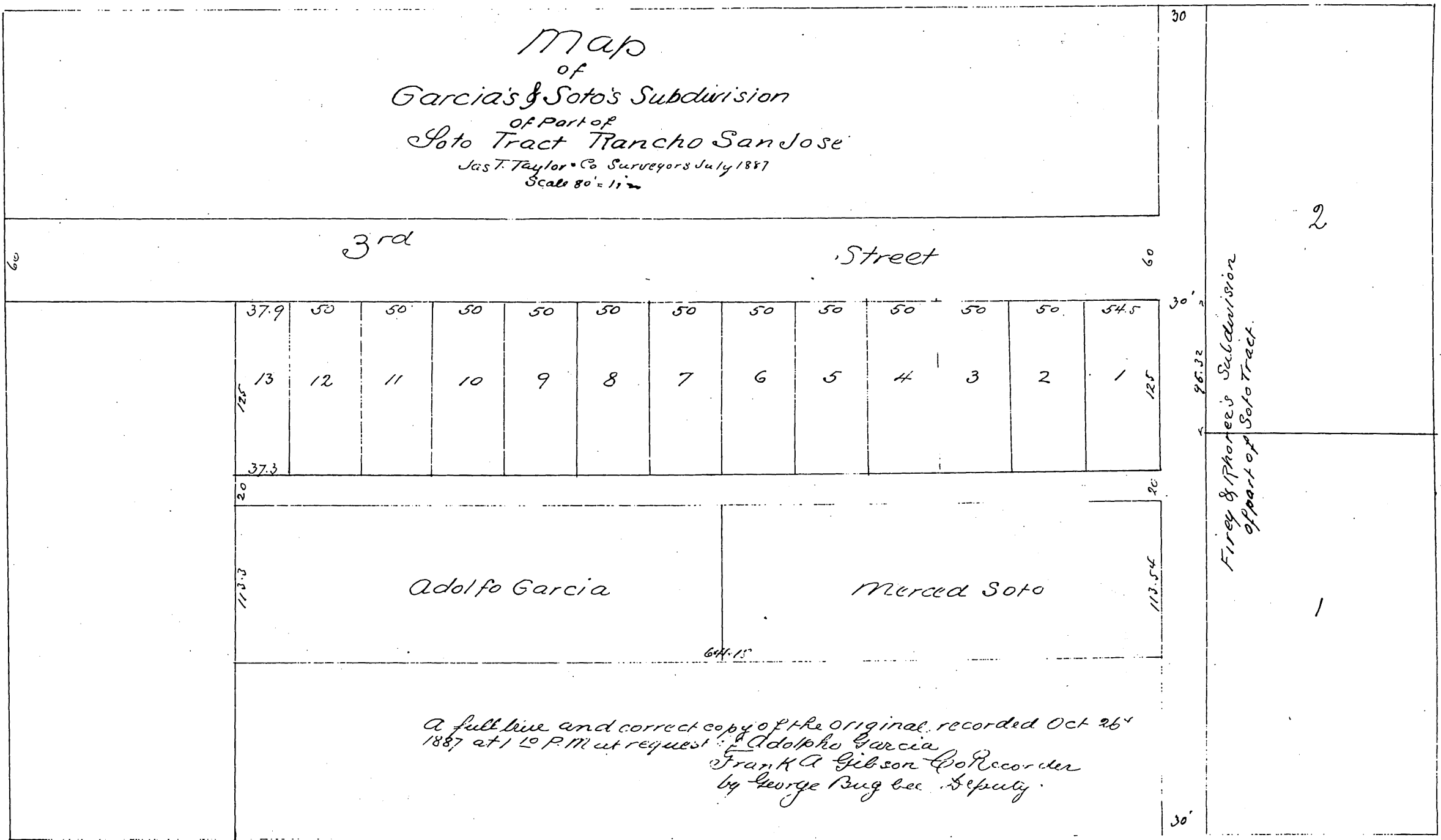


Map
of
Garcia's & Soto's Subdivision
of Part of
Soto Tract Rancho San Jose
Jas. T. Taylor & Co. Surveyors July 1887
Scale 80' = 1" =



60

3rd

Street

60

37.9	50	50	50	50	50	50	50	50	50	50	50	50	54.5
13	12	11	10	9	8	7	6	5	4	3	2	1	

37.3

20

113.3

Adolfo Garcia

Merced Soto

644.15

20

113.54

30

Firey & Phoree's Subdivision
of part of Soto Tract.

2

1

30

A full true and correct copy of the original recorded Oct 26th
1887 at 1st P.M. at request of Adolfo Garcia
Frank A. Gibson Co. Recorder
by George Bugbee Deputy.

